

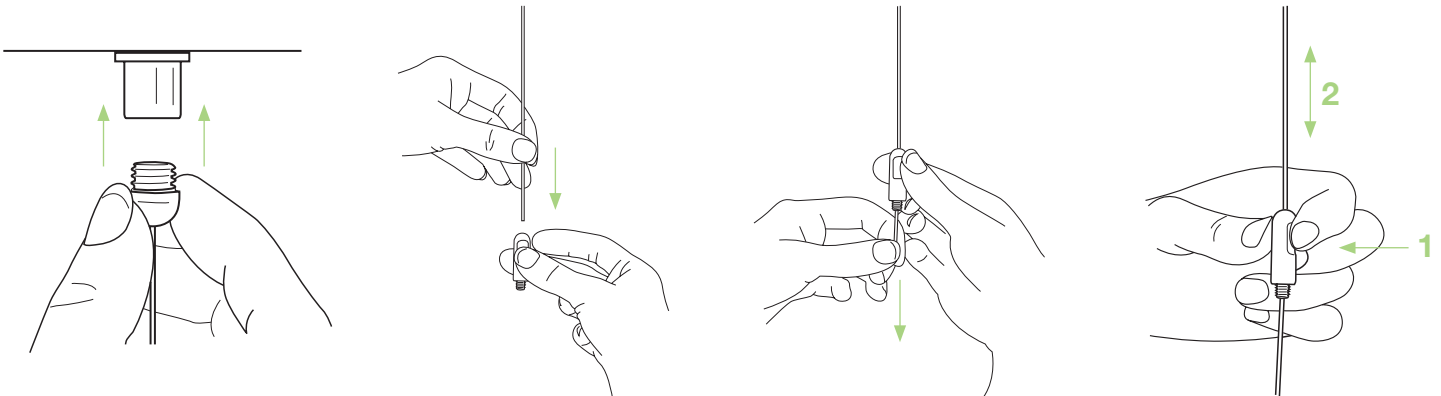
The new Gripple Squeezelock range is designed for suspending all types of lighting and signage.

## Product Information

- Complimentary, aesthetic design
- Easy, one-handed 'squeeze' adjustment up-or-down
- Bright plated finish
- Supplied in ready-to-use kits
- Extensive ceiling fixing options to suit most substrates
- Available in lengths of 5 ft, 10 ft, 15 ft, 20 ft, and 30 ft as standard
- No tools required
- 33 lb safe working load per hanger, with a 5:1 safety factor



## Installation



## Product Dimensions

Model	Ø (in)	Length (in)	Unit weight (g)
Central exit	3/8	1 3/16	12
Side exit	3/8	1 5/8	17
Y-Fit	3/8	1 5/8	17
Hook	3/8	2 5/8	25

## Product Information

As standard, all kits come complete with the aesthetic 'bullet barrel' ceiling fixing with 1/4" thread (BB14), other ceiling fixings, eg. Loops, Studs, etc. are available on request.

