

Duct trapeze



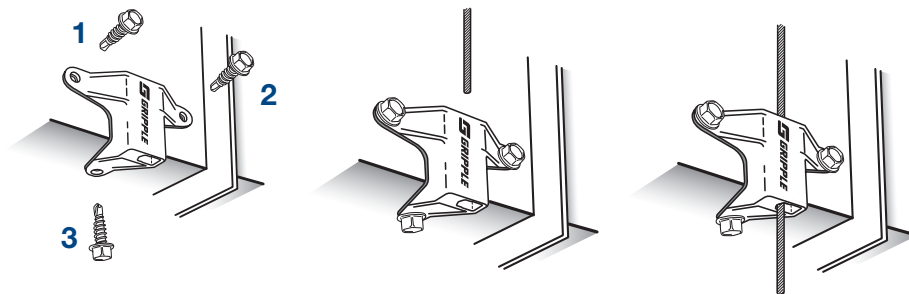
Purpose-made single channel, ideal for fast suspension of rectangular ducts.

ADVANTAGES

- Eliminates channel support
- 3 attachment points use self-drilling screws to equalize the load
- Pin allows rapid adjustment
- Load rated at 100 lbs with a 5:1 safety factor
- Supplied as a ready-to-use kit
- Available with a wide range of end fixings



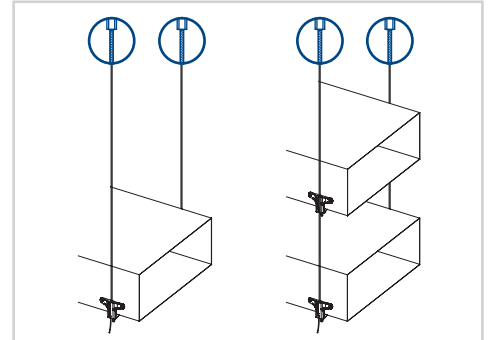
INSTALLATION GUIDELINES



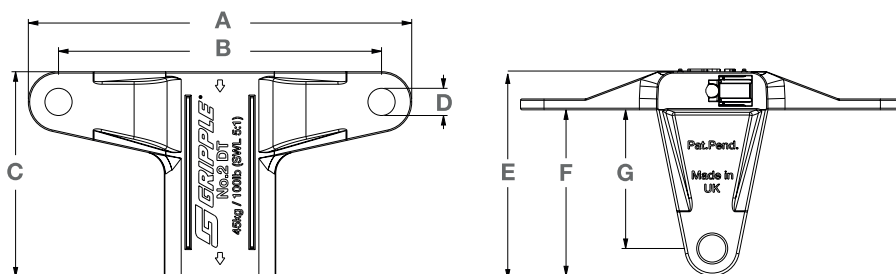
END FIXINGS



For further detailed information on any of our end fixings, please visit our website or contact us using the information below.



PRODUCT SPECIFICATIONS



Dimension	Inches
A	2 ²⁵ / ₃₂
B	2 ¹¹ / ₃₂
C	1 ¹⁵ / ₃₂
D	Ø - ¹³ / ₆₄
E	1 ¹ / ₂
F	1 ¹³ / ₆₄
G	1