

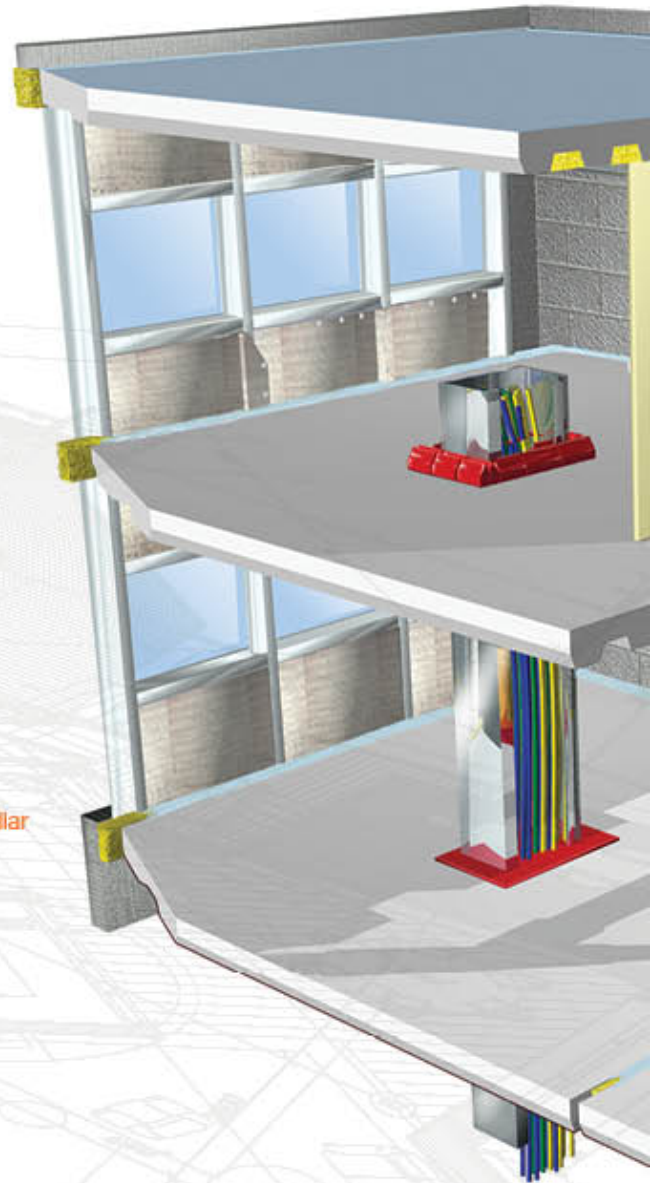


FIRESTOPPING

***PRODUCTS & SOLUTIONS FOR LIFE
SAFETY & CODE COMPLIANCE***

Penetration Firestop Systems

	4	 Triple S® Intumescent Firestop Sealant
	5	 LCI Intumescent Firestop Sealant
	5	 LC Endothermic Firestop Sealant
	6	 WF300 Residential Firestop Caulk
	6	 SSM Firestop Mortar
	7	 Smoke N' Sound Acoustical Spray
	7	 Smoke N' Sound Acoustical Sealant
	8	 Cast-In Firestop Devices
	9	 Composite Sheet
	9	 FyreFlange™ HVAC Firestop Angle
	10	 LCC Intumescent Firestop Collars
	10	 SSC Intumescent Firestop Collars
	11	 RTC Intumescent Range Taking Firestop Collar
	11	 SSW Intumescent Wrap Strips
	12	 SSB Intumescent Pillows
	13	 Closet Flange Firestop Gasket
	13	 SIL Silicone Firestop Sealant



Fail Safe Firestop Solution



The only *zero maintenance* fire-rated cabling solution: Nothing to remove, reinstall or retighten.

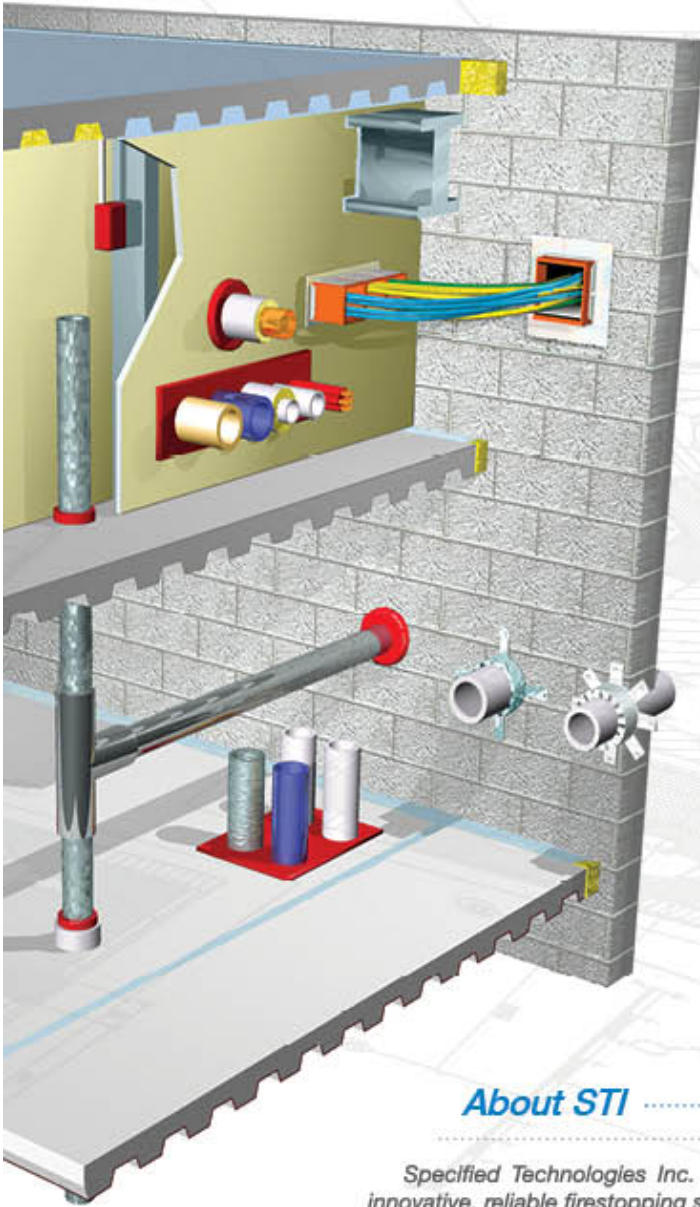


Permanent Firestop Solution



Re-Enterable Firestop Solution

Safety & Code Compliance



Joint Firestop Systems

-  14  FastTack® Firestop Spray
-  15  AS200 Elastomeric Firestop Spray
-  15  ES Elastomeric Sealant
-  16  Speedflex® Track Top Gasket
-  16  Speedflex® Joint Profile

Electrical & Datacom Firestop Systems

-  17  CS Gable Spray
-  17  EP Electrical Box Inserts
-  18  Ready® Sleeve
-  18  Ready® Split Sleeve
-  19  FP Intumescent Firestop Plugs
-  19  SSP Intumescent Firestop Putty/Pads
-  22  EZ-Path® Firestop Grommet
-  22  EZ-Path® Fire Rated Pathways

About STI

Specified Technologies Inc. (STI) is an industry leader solely committed to the development of innovative, reliable firestopping solutions that help stop the spread of fire, smoke and toxic fumes.

For over 25 years, our management team has worked hand in hand with the construction industry to create innovative firestop solutions for all types of new construction and retrofit applications. We offer the broadest range of UL® Classified Systems — more than any other manufacturer. We keep material requirements to a minimum and we design systems with the installer in mind. The result is improved productivity and significantly lower installed costs.



PENETRATION FIRESTOP SYSTEMS

Through-penetration firestop products when used as part of a UL classified system are intended to restore the hourly rating of fire rated floors and walls that have been breached due to penetration by electrical wires, data cables, plumbing, or mechanical items. Intumescent products crush combustible penetrants, fill the gap, and provide an insulative char that prevents fire and smoke from passing through the opening for the duration of the fire exposure. Endothermic products for non-combustible penetrants utilize heat absorbing, ablative technology to provide fire and smoke protection for the duration of the fire exposure.

TRIPLE S INTUMESCENT SEALANT

Premium grade, water-based firestop sealant featuring STI's patented two-stage intumescent technology. The perfect choice for the broadest array of combustible and noncombustible penetrants requiring a permanent, durable seal.

FEATURES & BENEFITS:

- Patented two-stage intumescent technology - extremely fast and directionalized expansion.
- Water-based - easy installation, cleanup and disposal.
- Excellent smoke seal.
- Low shrinkage.
- Acoustically tested - reduces noise transmission.
- Paintable (when dry).
- Water-resistant - will not re-emulsify when dry!
- Safe - low VOCs, no solvents, non-halogenated.

APPLICATIONS:

- Metallic pipes, conduits and tubing.
- Nonmetallic pipes, conduits and tubing
- Multi-service penetrations including AC line sets, electrical, telephone, or TV service entrance and interior penetrations.
- Great choice for industrial and institutional power and utility.
- Complete wood floor firestopping package for electrical, plumbing, HVAC, TV and telephone.
- Cable, cable trays and bus duct.
- HVAC ductwork.
- Insulated pipes.

TEST STANDARDS: ASTM E814, UL 1479, CAN/ULC S115



 Red Color



UPC#	CAT NO.	DESCRIPTION	QTY	CASE QTY	WEIGHT
730573					
01100	SSS100	10.1 oz. Tube (18.2 Cu. In., 300 ml)	1	12	.9 lbs (.4 kg)
01102	SSS102	2 gal. Pail (462 Cu. In., 7.6 L)	1	n/a	20 lbs (9 kg)
01105	SSS105	5 gal. Pail (1155 Cu. In., 19.0 L)	1	n/a	50 lbs (22.7 kg)
01103	SSS120	20 oz. Sausage (36 Cu. In., 592 ml)	1	12	1.55 lbs (.7 kg)
01129	SSS129	29 oz. Tube (52 Cu. In., 858 ml)	1	12	2.49 lbs (1.1 kg)

• **LCI INTUMESCENT SEALANT**



A Great Combination of Price and Performance in a Firestop Sealant. Commercial grade intumescent sealant specifically engineered and tested to economically address many common firestop applications that represent a significant part of the overall market.



FEATURES & BENEFITS:

- Fast-acting intumescence - expands up to 10X.
- Water-based - easy installation, cleanup and disposal.
- Excellent smoke seal.
- Water-resistant - will not re-emulsify when dry.
- Acoustically tested - reduces noise transmission.
- Safe - low VOCs, no solvents, non-halogenated.
- Sandable and paintable (when dry).

APPLICATIONS:

- Metallic pipes, conduits and tubing.
- Nonmetallic pipes, conduits and tubing.
- Electrical and electronic cabling including service entrance, power distribution, computer, telephone, and television.
- Metal duct work including HVAC, bath and dryer vents.
- Insulated pipes including heating, cooling, and condensation applications.
- Complete wood floor firestopping package for electrical, plumbing, HVAC, telephone, and television.
- Construction joints.

TEST STANDARDS: ASTM E814, UL 1479, CAN/ULC S115, E1966, UL2079

■ Light Red Color		ACOUSTICAL STC 62 in STC 80-Rated Wall Assembly			
UPC# 730673	CAT. NO.	DESCRIPTION	QTY.	CASE QTY.	WEIGHT
01170	LCI300	10.1 oz. Tube (18.2 Cu. In., 300 ml)	1	12	.94 lbs (.42 kg)
01175	LCI305	5 gal. Pail (1155 Cu. In., 19.0 L)	1	n/a	50 lbs (22.7 kg)
01172	LCI320	20 oz. Sausage (36 Cu. In., 592 ml)	1	12	1.59 lbs (.72 kg)
01179	LCI329	29 oz. Tube (52 Cu. In., 858 ml)	1	12	2.27 lbs (1 kg)



• **LC ENDOTHERMIC SEALANT**



A latex-based, high solids firestop sealant. When properly installed, it effectively seals penetration openings and joints against the spread of fire, smoke and toxic gases.



FEATURES & BENEFITS:

- Water-based - easy installation, cleanup and disposal.
- Endothermic fillers - absorb heat and release water.
- High solids formula - no shrinkage!
- Paintable (when dry).
- Safe - low VOCs, no solvents, non-halogenated.
- Excellent sealing properties along with high build capabilities.
- Excellent smoke seal.

APPLICATIONS:

- Metallic pipes, conduits and tubing.
- Complex multiple penetrants.
- Electrical cabling systems.
- Construction joints.
- HVAC ducts.

TEST STANDARDS: ASTM E814, UL 1479, CAN/ULC S115, E1966, UL2079

■ Deep Red Color		ACOUSTICAL STC 61 in STC 81-Rated Wall Assembly			
UPC# 730673	CAT. NO.	DESCRIPTION	QTY.	CASE QTY.	WEIGHT
01130	LC150	10.1 oz. Tube (18.2 Cu. In., 300 ml)	1	12	.94 lbs (.42 kg)
01135	LC155	5 gal. Pail (1155 Cu. In., 19.0 L)	1	n/a	58 lbs (26.3 kg)
01133	LC120	20 oz. Sausage (36 Cu. In., 592 ml)	1	12	2.66 lbs (1.21 kg)
01131	LC129	29 oz. Tube (52 Cu. In., 858 ml)	1	12	2.66 lbs (1.21 kg)



WF300 INTUMESCENT FIRESTOP CAULK



Designed for use in sealing through-penetrations and gaps in wood frame construction.



FEATURES & BENEFITS:

- Economical - delivers maximum fire protection at the right price.
- Water-based - easy installation, clean-up and disposal.
- Water-resistant - will not re-emulsify.
- Intumescent - expansion fills gaps or voids caused by wood shrinkage, or burning or melting of combustible materials.
- Meets ASTM E814 (ANSI/UL 1479).
- Acoustically tested - reduces noise transmission.

APPLICATIONS:

- Through-penetrations and gaps in wood frame construction.

TEST STANDARDS: ASTM E814, UL 1479, CAN/ULC S115

Deep Red Color



UPC# 730573	CAT. NO.	DESCRIPTION	QTY.	CASE QTY.	WEIGHT
09710	WF310	10.1 oz. Tube (18.2 Cu. In., 300 ml)	1	12	.94 lbs (0.42 kg)
09705	WF305	5 gal. Pail (1155 Cu. In., 19.0 L)	1	n/a	58 lbs (26.3 kg)
09720	WF320	20 oz. Sausage (36 Cu. In., 592 ml)	1	12	1.59 lbs (0.72 kg)



SSM FIRESTOP MORTAR



Suitable for openings of all sizes. Its method of application makes it specifically useful for medium to large openings through concrete or masonry floors or walls with simple to very complicated combinations of penetrants.



FEATURES & BENEFITS:

- Light weight/low density - less forming and support required. Easy retrofit!
- Fast drying - forms come down faster!
- Economical - highest yield per pound means lower installed cost.
- Wide range of applications - includes aluminum cable tray.
- Red color - easy identification and inspection.
- Chemical adhesion - reduces the need for expensive and time-consuming concrete fasteners.
- Trowelable or self-leveling.

APPLICATIONS:

- Medium to large openings through common constructions.
- Loose cable for power, voice, data.
- Single or multiple cable trays for power, voice and data.
- Bus ducts.
- Multiple metallic conduits & tubing.
- Multiple, mixed penetrants of all types.

TEST STANDARDS: ASTM E814, UL 1479, CAN/ULC S115

Pale Red Color



UPC# 730573	CAT. NO.	DESCRIPTION	QTY.	CASE QTY.	WT. LBS.
04106	SSM106	Mortar 6 gal. Pail (22 Lbs., 10 Kilos)	1	n/a	24 lbs (10.88 kg)
04200	SSM22B	Mortar Bag (22 Lbs., 10 Kilos)	1	n/a	23 lbs (10.43 kg)



PENETRATION FIRESTOP SYSTEMS

SMOKE 'N' SOUND ACOUSTICAL SPRAY



A high quality acrylic latex coating designed for sealing through-penetrations (such as pipes, conduits, cabling, busways and openings) and membrane penetrations (such as p-traps and outlet boxes) in smoke resistant walls.



FEATURES & BENEFITS:

- Water-based - for easy installation and clean-up.
- Excellent smoke seal.
- Acoustically tested - reduces noise transmission.
- High build characteristics.
- Safe. Low VOCs. No solvents! Non-halogenated.
- Economical spray application saves labor!

APPLICATIONS:

- Smoke Control: Where stopping the passage of smoke is necessary such as in smoke partition walls.
- Noise Control: Where reducing the transmission of sound through wall openings is necessary to help ensure occupant privacy and peaceful environment.
- Infectious/Dust Control: Where reducing the transmission of dust and other airborne particulates through wall openings is necessary.

TEST STANDARDS: ASTM E90, C919, C834

White Color Permanent Solution **ACOUSTICAL STC 61** In STC 61-Rated Wall Assembly



UPC# 730573	CAT. NO.	DESCRIPTION	QTY.	CASE QTY.	WEIGHT
01155	SNS205	5 gal. Pail (1155 Cu. In., 19.0 L)	1	n/a	54 lbs (24.50 kg)

SMOKE 'N' SOUND ACOUSTICAL SEALANT



A high quality acrylic latex sealant designed for sealing through-penetrations (such as pipes, conduits, cabling, busways and openings) and membrane penetrations (such as p-traps and outlet boxes) in smoke resistant walls.



FEATURES & BENEFITS:

- Economical - high performance without the high price!
- Water-resistant - will not re-emulsify when dry.
- Water-based - easy installation, cleanup, and disposal.
- Remains Flexible - allows movement.
- Acoustically Tested - reduces noise transmission.
- Safe. Low VOCs. No solvents! Non-halogenated.

APPLICATIONS:

- Smoke Control: Where stopping the passage of smoke is necessary such as in smoke partition walls.
- Noise Control: Where reducing the transmission of sound through wall openings is necessary to help ensure occupant privacy and peaceful environment.
- Infectious/Dust Control: Where reducing the transmission of dust and other airborne particulates through wall openings is necessary.

TEST STANDARDS: ASTM E90, C919, C834

White Color Yellow Color Permanent Solution **ACOUSTICAL STC 62** In STC 62-Rated Wall Assembly



UPC# 730573	CAT. NO.	DESCRIPTION	QTY.	CASE QTY.	WEIGHT
01154	SNS105	5 gal. Pail (1155 Cu. In., 19.0 L)	1	n/a	70 lbs (31.75 kg)
11154	SNS105W	5 gal. Pail (1155 Cu. In., 19.0 L)	1	1	70 lbs (31.75 kg)
11151	SNS120W	20 oz. Sausage 36 Cu. In. (592 ml)	1	12	2.06 lbs (0.93 kg)



CAST-IN FIRESTOP DEVICES

Create Factory-Firestopped Openings as the concrete is poured!

FEATURES & BENEFITS:

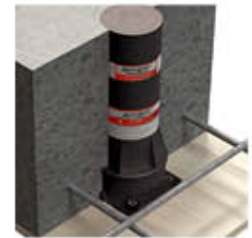
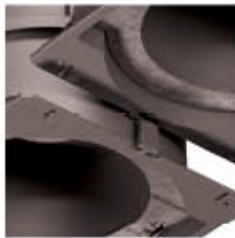
- Saves money by eliminating core drilling.
- Saves time. No firestopping step required.
- Provides pre-installed fire and smoke sealing.
- Provides added protection against transient water.
- Adapts to a wide variety of construction conditions.



APPLICATIONS:

- 2", 3", 4", and 6" trade size plastic or metallic pipes.
- Insulated metallic pipes.
- Cable bundles.
- Concrete ranging in depth from 2-1/2" (64 mm) to 8" (204 mm).
- Concrete greater than 8" (204 mm) using available extension tubes.
- Concrete over steel deck using available Deck Adapter Kit.

TEST STANDARDS: ASTM E814, UL 1479, CAN/ULC S115



UPC# 730573	CAT NO.	DESCRIPTION	QTY	CASE QTY	WEIGHT
Devices for Combustible and Noncombustible Penetrants					
34200	CD200	2" (51 mm) Trade Size Cast-In Firestop Device	1	6	0.90 lbs (0.41 kg)
34300	CD300	3" (76 mm) Trade Size Cast-In Firestop Device	1	6	1.05 lbs (0.47 kg)
34400	CD400	4" (102 mm) Trade Size Cast-In Firestop Device	1	6	1.35 lbs (0.61 kg)
34600	CD600	6" (152 mm) Trade Size Cast-In Firestop Device	1	6	4.67 lbs (2.12 kg)
Extension Tubes					
34202	CD200X	2" (51 mm) Trade Size Extension Tube	1	6	0.17 lbs (0.07 kg)
34302	CD300X	3" (76 mm) Trade Size Extension Tube	1	6	0.21 lbs (0.09 kg)
34402	CD400X	4" (102 mm) Trade Size Extension Tube	1	6	0.25 lbs (0.11 kg)
34602	CD600X	6" (152 mm) Trade Size Extension Tube	1	6	0.35 lbs (0.16 kg)
Deck Adapter Kits					
34203	CD200DK	2" (51 mm) Trade Size Metal Deck Adapter	1	6	0.28 lbs (0.13 kg)
34303	CD300DK	3" (76 mm) Trade Size Metal Deck Adapter	1	6	0.45 lbs (0.20 kg)
34403	CD400DK	4" (102 mm) Trade Size Metal Deck Adapter	1	6	0.53 lbs (0.24 kg)
34603	CD600DK	6" (152 mm) Trade Size Metal Deck Adapter	1	6	0.63 lbs (0.28 kg)
Tub Box Kits					
34204	CD200T	2" (51 mm) Trade Size Tub Box Kit	1	1	2.5 lbs (1.13 kg)

• COMPOSITE SHEET



Lightweight, easily fabricated panels surface mount to walls and floors to provide a neat, clean firestop seal for medium to large openings with a variety of penetrants in fire-rated floors and walls.



FEATURES & BENEFITS:

- Lighter and thinner - approximately 1/2 the weight and thickness of traditional composite sheet.
- Easier to fabricate - engineered with the installer in mind.
- Can be cut and installed with common sheet metal tools.
- Intumescent - expands up to 15 times when exposed to temperatures in excess of 350°F (177°C) compared to 8-10 times for competing brands. Forms a dense insulative char that minimizes heat transfer.
- Hole reduction - reduces large openings when used in conjunction with other SpecSeal® or EZ-Path® Firestop Products.
- Acoustically tested - reduces sound transmission.

APPLICATIONS:

- Medium to large openings through common constructions.
- Single or multiple cable trays for power, voice, data.
- Multiple metallic conduits & tubing.
- Multiple mixed penetrants of many types.
- Suitable for clean room/area environment.
- Combine with the EZ-PATH® System for cable penetrations through large openings.
- Insulated metallic pipes.
- Blank openings.
- Plastic pipes.
- Metal pipes.
- Bus ducts.

TEST STANDARDS: ASTM E814, UL 1479, CAN/ULC S115

Bare Metal Color



UPC# 730573	CAT. NO.	DESCRIPTION	QTY.	CASE QTY.	WEIGHT
11628	CS1628	16 x 28 in. (41 x 71 cm)	1	1	4.40 lbs (1.99 kg)
12436	CS2436	24 x 36 in. (61 x 92 cm)	1	1	8.40 lbs (3.81 kg)
13636	CS3636	36 x 36 in. (92 x 92 cm)	1	1	12.60 lbs (5.71 kg)
14136	CS3641	36 x 41 in. (92 x 104 cm)	1	1	14.4 lbs (6.53 kg)
15228	CS2852	28 x 52 in. (71 x 132 cm)	1	1	14.2 lbs (6.44 kg)



• FYREFLANGE™ HVAC FIRESTOP ANGLE



FyreFlange™ HVAC Firestop Angle provides duct support and firestopping in one product. It has a factory applied intumescent gasket and is designed and engineered to eliminate the need for firestop sealant and backing material. FyreFlange™ saves time and labor while providing excellent fire protection.



FEATURES & BENEFITS:

- Single stage installation.
- Economical - saves labor.
- Clearly marked for easy inspection.
- No additional firestop or backing material required.
- Eliminates the need for multiple inspections.
- Can be installed over or under duct installation.

APPLICATIONS:

- For use with max. 2 in. thick light density insulation, insulated or non-insulated ducts in walls.
- UL® Classified systems for HVAC ducts through gypsum and masonry walls.

TEST STANDARDS: ASTM E814, UL 1479, CAN/ULC S115

Red Color



UPC# 730573	CAT. NO.	DESCRIPTION	QTY.	CASE QTY.	WEIGHT
32208	FFA2208	FyreFlange™ Steel Angle - 2" X 2" X 96" (51 mm X 51 mm X 244 cm)	1	6	4.25 lbs (1.92 kg)
30022	FFC22	Corner Angle Pack - 8 per pack	1	n/a	0.81 lbs (0.36 kg)
30023	FFS22	FyreFlange™ Splice - 6 per pack	1	n/a	0.70 lbs (0.31 kg)



LCC INTUMESCENT FIRESTOP COLLARS



The economical solution for firestopping common plastic pipe that doesn't compromise safety or performance.



FEATURES & BENEFITS:

- Easy installation - uses STI's quick closure system.
- Compact profile - use it in all the tight spots!
- Water-resistant - no water soluble or hygroscopic ingredients.
- Fast-acting expansion (up to 60X) - to seal off burning pipes.
- Safe for contact with plastics.

APPLICATIONS:

- Protects a variety of plastic pipes - PVC, PVC Foam Core (ccPVC), CPVC, ABS, ABS Foam Core (ccABS), FRPP, PP, PVDF and HDPE pipes.
- Vented (DWV) and closed (electrical conduit and water supply) installations.

TEST STANDARDS: ASTM E814, UL 1479, CAN/ULC S115



UPC# 730673	CAT. NO.	DESCRIPTION	QTY.	CASE QTY.	WEIGHT
03901	LCC150	For 1.5" (38 mm) plastic pipe	1	6	0.22 lbs (0.99 kg)
03902	LCC200	For 2.0" (51 mm) plastic pipe	1	6	0.25 lbs (0.11 kg)
03903	LCC300	For 3.0" (76 mm) plastic pipe	1	6	0.49 lbs (0.22 kg)
03904	LCC400	For 4.0" (102 mm) plastic pipe	1	6	0.73 lbs (0.33 kg)



PENETRATION FIRESTOP SYSTEMS

SSC INTUMESCENT FIRESTOP COLLARS



A heavy duty firestop collar for more demanding applications.



FEATURES & BENEFITS:

- Easy installation - uses STI's quick closure system.
- Water-resistant - no water soluble or hygroscopic ingredients.
- Fast-acting expansion (up to 60X) - to seal off burning pipes.
- Safe for contact with plastics.
- Tested to 50 Pa of pressure (CAN/ULC S115)

APPLICATIONS:

- Protects a variety of plastic pipes - XFR PVC, PVC, PVC Foam Core (ccPVC), CPVC, ABS, ABS Foam Core (ccABS), FRPP, PP, PVDF and HDPE pipes.
- Vented (DWV) and closed (electrical conduit and water supply) installations.

TEST STANDARDS: ASTM E814, UL 1479, CAN/ULC S115



UPC# 730673	CAT. NO.	DESCRIPTION	QTY.	CASE QTY.	WEIGHT
03150	SSC150	For 1.5" (38 mm) plastic pipe	1	6	0.22 lbs (0.99 kg)
03200	SSC200	For 2.0" (51 mm) plastic pipe	1	6	0.25 lbs (0.11 kg)
03300	SSC300	For 3.0" (76 mm) plastic pipe	1	6	0.49 lbs (0.22 kg)
03400	SSC400	For 4.0" (102 mm) plastic pipe	1	6	0.73 lbs (0.33 kg)
03600	SSC600	For 6.0" (152 mm) plastic pipe	1	2	4.67 lbs (2.11 kg)



RTC INTUMESCENT FIRESTOP COLLARS



Versatile range-taking solution for multiple pipe sizes or pipes with hubs.



FEATURES & BENEFITS:

- Adjustable - one collar fits 3" and 4" pipes and corresponding couplings.
- Rapid expansion - closes off burning pipes quickly.
- Small profile - use it in all the tight spots!
- Flexible and durable - no loose flakes (eye hazards).
- Water-resistant - no water soluble or hygroscopic ingredients.
- Economical - lower installed cost.
- High volume char - expands up to 60 times!
- Replaces traditional field-erected wrap strip/restraining collar systems for pipe couplings.
- Reduces inventory - one convenient product covers 3 and 4 in. trade size pipes. Use sealant for 2 in. and smaller trade size pipes!

APPLICATIONS:

- Protects a variety of plastic pipes and couplings including PVC, PVC Cellular Core (ccPVC), CPVC, ABS, and ABS Cellular Core (ccABS).
- Both vented (DWV) and closed (electrical conduit or water supply) installations.
- All common constructions including concrete floors, concrete over steel deck, concrete walls, concrete block wall, gypsum board/stud walls, wood flooring/ceiling assemblies.

Metallic Color



TEST STANDARDS: ASTM E814, UL 1479

UPC# 730573	CAT. NO.	DESCRIPTION	QTY.	CASE QTY.	WEIGHT
03835	RTC350	For 3" (76 mm) & 4" (102 mm) trade size pipes and corresponding couplings	1	6	0.70 lbs (0.31 kg)



SSW INTUMESCENT WRAP STRIPS



An economical solution for firestopping combustible penetrants available in rolls or precut strips of varying width and thickness.

RED2 – Standard wrap strip for common plastics, including PVC and ABS, provided in 1-1/2 in. (38 mm) by 12 ft (366 cm) rolls

BLU2 – Premium wrap strip for high performance plastics, including PP and PVDF, provided in 2 in. (51 mm) by 12 ft (366 cm) rolls

SSW and BLU2 Precuts – Various shapes and sizes precut to conform to pipe diameter based on UL System requirements



FEATURES & BENEFITS:

- Rapid intumescent expansion – closes off burning penetrants quickly
- Water resistant – no water soluble or hydroscopic ingredients
- Soft and flexible – easy to cut, easy to fabricate
- Suitable for use in field-assembled collars or tuck-in applications

APPLICATIONS:

- Firestopping combustible penetrants such as nonmetallic pipes or pipe insulation.
- All common forms of construction - concrete floors, concrete over steel deck, concrete walls, concrete block walls, gypsum board/stud walls, and wood floor/ceiling assemblies.
- Can be used with restraining collars or as a tuck-in.



TEST STANDARDS: ASTM E814, UL 1479, CAN/ULC S115

	UPC# 730573	CAT. NO.	DESCRIPTION	QTY.	CASE QTY.	WEIGHT
ROLLS	03711	SSWBLU2	1/8" (3 mm) Thick x 2" (51 mm) W x 12' (3.7 M) L	1	8	1.59 lbs (0.72 kg)
	03712	SSWRED2	1/8" (3 mm) Thick x 1.5" (38 mm) W x 12' (3.7 M) L	1	8	1.14 lbs (0.51 kg)
	03720	SSWBLU220	1/8" (3 mm) Thick x 1.5" (38 mm) W x 8" (203 mm) L - For 2" Pipe	1	25	1.64 lbs (0.74kg)
PRE CUTS / INSERTS	03730	SSWBLU230	1/8" (3 mm) Thick x 3" (76 mm) W x 11-3/16" (284 mm) L - For 3" Pipe	1	25	4.74 lbs (2.15 kg)
	03740	SSWBLU240	1/8" (3 mm) Thick x 4" (102 mm) W x 14-5/8" (371 mm) L - For 4" Pipe	1	25	7.82 lbs (3.54 kg)
	03125	SSW125	1/8" (3 mm) Thick x 1.5" (38 mm) W x 8.125" (206 mm) L - For 2" Pipe	25	-	1.38 lbs (0.62 kg)
	03250	SSW250	1/4" (6 mm) Thick x 1.5" (38 mm) W x 12.125" (308 mm) L - For 3" Pipe	25	-	5.13 lbs (2.32 kg)
ACCESSORIES	03375	SSW375	3/8" (9.5 mm) Thick x 1.5" (38 mm) W x 16.125" (410 mm) L - For 4" Pipe	25	-	8.88 lbs (4.02 kg)
	03750	SSWRC	Metal Restraining Collar 25' (7.6 M) - For use with SSWBLU2	1	1	5.06 lbs (2.29 kg)
	03752	SSWRC2	Metal Restraining Collar 25' (7.6 M) - For use with SSWRED2	1	1	3.76 lbs (1.71 kg)
	03753	WSC-8	Preformed Restraining Collar for 6" (152 mm) & 8" (203 mm) Plastic Pipe for use with BLU/BLU2	1	1	1.52 lbs (0.69 kg)
	03754	WSC-8RED	Preformed Restraining Collar for 6" (152 mm) Plastic Pipe for use with RED/RED2	1	1	1.06 lbs (0.48 kg)
	03760	WSC-12	Preformed Restraining Collar for 10" (254 mm) & 12" (305 mm) Plastic Pipe for use with BLU/BLU2	1	1	2.00 lbs (0.90 kg)

SSB INTUMESCENT FIRESTOP PILLOWS



Compressible cushions can be easily installed and removed. The perfect firestop solution for medium to large openings including cable bundles, cable trays, bus ducts and multiple conduits.



FEATURES & BENEFITS:

- Intumescent - expands in all directions for a tough, tight seal.
- Re-installable for easy retrofitting of cables.
- Single side application makes installation easy for tough access openings.
- Heat-sealed poly cover protects core and makes pillows slide in and out with ease.
- Superior air leakage ratings!
- Broad base of tested systems.

APPLICATIONS:

- Medium to large openings through common constructions.
- Loose cable for power, voice, data.
- Single or multiple cable trays for power, voice, data.
- Multiple metallic conduits & tubing.
- Multiple, mixed penetrants of all types.
- Bus ducts.

TEST STANDARDS: ASTM E814, UL 1479, CAN/ULC S115

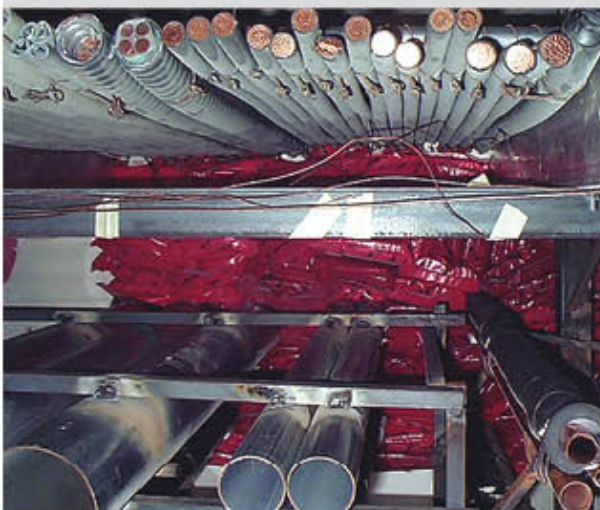


UPC# 730573	CAT. NO.	DESCRIPTION	QTY.	CASE QTY.	WEIGHT
06140	SSB14	1"x 4"x 9" (2.5 x 10 x 23 cm)	1	20	0.18 lbs (.08 kg)
06240	SSB24	2"x 4"x 9" (5.0 x 10 x 23 cm)	1	10	0.27 lbs (.12 kg)
06260	SSB26	2"x 6"x 9" (5.0 x 15 x 23 cm)	1	22	0.35 lbs (.16 kg)
06360	SSB36	3"x 6"x 9" (7.6 x 15 x 23 cm)	1	16	0.48 lbs (.22 kg)



PENETRATION FIRESTOP SYSTEMS

SpecSeal® Super System – Firestopping Solution for Multiple Penetrants



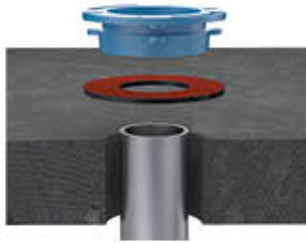
SpecSeal® Super System UL pre-test assembly

- ▶ **Outstanding firestopping flexibility:**
For non-standard or unusual conditions often encountered in existing building and retrofit applications.
- ▶ **Excellent new construction flexibility:**
For designers who want a large or a single opening with multiple penetrants.
- ▶ **Economical, retrofittable intumescent pillows:**
Forms a tough, tight seal against smoke and flames.
- ▶ **UL® tested and Classified:**
Protection for metallic and non-metallic penetrants in openings up to 18 square feet.

CLOSET FLANGE FIRESTOP GASKET



A one-piece, molded rubber, intumescent pad that installs beneath a 3" or 4" (76 mm or 102 mm) closet flange to effectively firestop the opening. No caulk to clean. Installs from the top, saving labor.



FEATURES & BENEFITS:

- Seamless fit for fast, easy installation with no tools required
- Lower installed cost
- Foolproof installations
- Installs from the top, saving labor.
- No caulk to clean up
- Always ready to use. No shelf life. No caulk tubes to dry out.
- UL Classified. Code compliant

APPLICATIONS:

- Designed to allow the drain pipe connected to a toilet flange to be properly firestopped without the need for firestop caulk for typical floor assemblies with plastic or metal pipes.
- Iron toilet flange and drain pipe.
- PVC & ABS toilet flange and drain pipe.

TEST STANDARDS: ASTM E814, UL 1479, CAN/ULC S115



UPC# 730573	CAT. NO.	DESCRIPTION	QTY.	CASE QTY.	WEIGHT
06360	CF34	3" or 4" (76 mm or 102 mm) trade size closet flange gasket	1	10	0.48 lbs (0.21 kg)



SIL SILICONE FIRESTOP SEALANT



A 100% silicone firestop sealant engineered to rapidly cure and resist washout when used in exposed conditions.



FEATURES & BENEFITS:

- Low modulus - allows up to ±50% movement capability.
- Auto-bonding - allows fresh sealant to adhere to cured sealant.
- Excellent water-resistance - for water-tight sealing.
- Ozone and UV-resistant - for excellent weathering ability and long service life.
- Excellent chemical resistance - best choice in polluted or corrosive atmospheres.
- Excellent adhesion to most building substrates (primerless adhesion).
- Acoustically tested - reduces noise transmission.
- UL tested for W ratings.

APPLICATIONS:

- Through-penetrations and joints.
- High temperatures or movement.
- Electrical, data, or telephone cables.
- Slab Edge/Curtain wall, safing and construction gaps.
- Seismic and expansion joints.
- Top-of-wall joints.
- Single or multiple metallic pipes, conduits & tubing.

Light Gray Color

TEST STANDARDS: ASTM E814, UL 1479, CAN/ULC S115, E1966, UL2079



UPC# 730573	CAT NO.	DESCRIPTION	QTY.	CASE QTY.	WEIGHT
01310	SIL300	10.1 oz. Tube (18.2 Cu. In., 300 ml)	1	24	1.02 lbs (0.46 kg)
01320	SIL320	20 oz. Sausage (36 Cu. In., 592 ml)	1	12	1.8 lbs (0.82 kg)
01305	SIL305	5 gal. Pail (1155 Cu. In., 19.0 L)	1	n/a	55 lbs (24.95 kg)
01322	SIL320SL*	20 oz. Sausage (36 Cu. In., 592 ml)	1	12	1.72 lbs (0.78 kg)
01326	SIL305SL*	5 gal. Pail (1155 Cu. In., 19.0 L)	1	n/a	53 lbs (24.04 kg)

*Note: SL designates Self-Leveling Silicone Joint Sealant





JOINT FIRESTOP SYSTEMS

Architectural joints and gaps products when used as part of a UL classified system are designed to prevent the spread of fire through a linear opening between the wall and/or floor assemblies. Architectural joints and gaps are most commonly found at the intersection of fire rated floors and walls as well as the curtain wall safing slot at the slab edge. Depending on the design criteria these joints and gaps may be either static or dynamic.

FAST TACK® FIRESTOP SPRAY

The Curtain Wall Firestop Coating that Won't Wash Out!

Silicone/copolymer hybrid formula provides fire protection for construction joints, curtain walls, and applications in concrete floors. Fast Tack® Firestop Spray is well suited for use around penetrants subject to vibration or movement or in areas that may be prone to washouts or exposure to water and moisture.

FEATURES & BENEFITS:

- All-weather formula.
- Skins over quickly to resist water.
- Quick-dry/tack-free in 2-4 hours.
- For use in extreme weather conditions (cold or rain)
- Cures below freezing.
- Can be top coated, spray coated or flow applied.
- Auto-bonds for easy touch ups.

APPLICATIONS:

- Slab Edge/Curtain wall conditions.
- Floor to floor joints.
- Floor to wall joints.

TEST STANDARDS: ASTM E814, E2307, UL 1479, CAN/ULC S115



UPC#	CAT. NO.	DESCRIPTION	QTY.	CASE QTY.	WEIGHT
730573	FT305	5 gal. Pail (1155 Cu. In., 19.0 L)	1	n/a	50 lbs (22.68 kg)



AS200 ELASTOMERIC SPRAY



The professionals choice for spray-applied firestop protection of joints and penetrations.



FEATURES & BENEFITS:

- Original quick-dry elastomeric formula.
- Water-based - for easy installation, clean-up and disposal.
- Thixotropic - superior high-build properties.
- Safe - low VOCs, no solvents, non-halogenated.
- Auto-bonding - may be re-coated or repaired using ES Sealant.
- Low abrasion - for longer pump life and less maintenance.
- Tested with direct-applied fireproofing.
- Acoustically tested - reduces noise transmission.
- Water-resistant - will not re-emulsify when dry.
- Up to 50% movement (ASTM E1966/UL2079).

APPLICATIONS:

- Slab edge/Curtain wall conditions.
- Head of wall - concrete fluted deck to gypsum wall.
- Head of wall - concrete slab to masonry wall.
- Control/expansion joints (wall & floor).
- Metallic pipes.
- Steel ducts.

TEST STANDARDS: ASTM E1966, E2307, UL2079

Light Blue Color Red Color



UPC# 730573	CAT NO.	DESCRIPTION	QTY	CASE QTY	WEIGHT
07107	AS205	5 gal. Pail (1155 Cu. In., 19.0 L)	1	n/a	50.00 lbs (22.68 kg)
07108	AS205R	5 gal. Pail (1155 Cu. In., 19.0 L) - Red	1	n/a	50.00 lbs (22.68 kg)

ES ELASTOMERIC SEALANT



A premium grade latex joint sealant for high movement applications



FEATURES & BENEFITS:

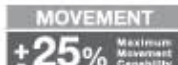
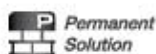
- Elastomeric - allows movement.
- Water-based - easy installation, clean up and disposal.
- Auto-bonding.
- Compatible with AS200 Spray
- Safe - low VOCs, no solvents, non-halogenated.
- Water-resistant - will not re-emulsify when dry.
- Acoustically tested - reduces noise transmission.

APPLICATIONS:

- Control/expansion joints.
- Slab edge conditions.
- Head of wall - concrete fluted and slab.
- Bottom of wall-deck to gypsum wall.
- Joints and gaps in sound barriers.

TEST STANDARDS: ASTM E1966, UL2079

Light Blue Color Red Color

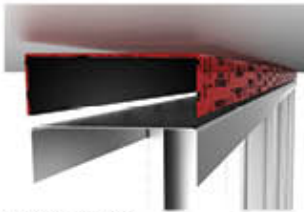


UPC# 730573	CAT NO.	DESCRIPTION	QTY	CASE QTY	WEIGHT
08100	ES100	10.1 oz. Tube (18.2 Cu. In., 300 ml)	1	12	1.12 lbs (0.5 kg)
08101	ES100R	10.1 oz. Tube (18.2 Cu. In., 300 ml) - Red	1	12	1.12 lbs (0.5 kg)
08105	ES105	5 gal. Pail (1155 Cu. In., 19.0 L)	1	n/a	62.00 lbs (28.12 kg)
08106	ES105R	5 gal. Pail (1155 Cu. In., 19.0 L) - Red	1	n/a	62.00 lbs (28.12 kg)
08103	ES120	20 oz. Sausage (36 Cu. In., 592 ml)	1	12	1.96 lbs (0.89 kg)
08104	ES120R	20 oz. Sausage (36 Cu. In., 592 ml) - Red	1	12	1.96 lbs (0.89 kg)
08129	ES129	29 oz. Tube (52 Cu. In., 858 ml)	1	10	3.04 lbs (1.38 kg)
08131	ES129R	29 oz. Tube (52 Cu. In., 858 ml) - Red	1	10	3.04 lbs (1.38 kg)

SPEEDFLEX® TRACK TOP GASKET



An intumescent cover for the ceiling track providing Fire, Smoke, and Acoustical ratings for head-of-wall joints between gypsum walls and concrete floor slabs. TTG is compatible with all ceiling track and provides an economical method of providing the required seal in rated and non-rated wall construction.



PATENTS PENDING

FEATURES & BENEFITS:

- No caulk, no hassle, one-step solution. Improves productivity. Controls cost.
- Fits all common track sizes. Lightweight, easy to handle rolls.
- Eliminates estimating and installation guesswork. Inspect at any time.
- Simple peel, stick, and shoot installation. Water resistant, no shelf life.
- Up to 100% Movement.

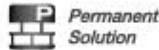
APPLICATIONS:

- Head-of-Wall Joints
- Gypsum to Flat Concrete Slab
- Non-rated acoustical walls or fire/smoke rated walls

FIRE. SMOKE. ACOUSTICAL.

TEST STANDARDS: ASTM E1966, UL 2079, CAN/ULC S115

Red Color



UPC# 730573	CAT. NO.	DESCRIPTION	QTY.	CASE QTY.	WEIGHT
08350	TTG350	Track top gasket for 3-1/2" (89 mm) or 3-5/8" (92 mm) ceiling track – 150 foot (45.7 meter) roll	1	n/a	17 lbs. (7.7 kg)
08400	TTG400J	Track top gasket for 4" (102 mm) J-shaped ceiling track – 150 foot (45.7 meter) roll	1	n/a	21 lbs. (9.5 kg)
08600	TTG600	Track top gasket for 6" (152 mm) ceiling track – 150 foot (45.7 meter) roll	1	n/a	24 lbs. (10.9 kg)



JOINT FIRESTOP SYSTEMS

SPEEDFLEX® JOINT PROFILE



Combines a unique backer product with SpecSeal® spray-applied coatings. This system installs over joints rather than within them to allow maximum joint movement (+100%). Excellent repair system for cracked or improperly sealed joints.



FEATURES & BENEFITS:

- Seismic testing.
- Replaces mineral wool in construction joints.
- Tested to ASTM E 1966 and ANSI/UL 2079.
- Clean, professional appearance.
- Can be used to repair cracked joints.
- Use with other SpecSeal® Firestop Products.

APPLICATIONS:

- Head of wall construction joints.
- Fluted deck.
- Flat slab.
- Repair/retrofit of cracked joints.

TEST STANDARDS: ASTM E1966, UL 2079, CAN/ULC S115

Yellow Color



UPC# 730573	CAT. NO.	DESCRIPTION	QTY.	CASE QTY.	WEIGHT
08144	SFJP40	Fire Rated Joint Profile Forming Material	1	150	1 lbs (0.45 kg)





ELECTRICAL & DATACOM FIRESTOP SYSTEMS

Data and electrical firestop products when used as part of a UL classified system are intended to restore the hourly rating of fire rated floors and walls that have been breached due to penetration by electrical wires, data cables, boxes, trays and other items. Data cable penetrations are routinely reentered for cable moves, adds, or changes or MACs as they are commonly known. A class of firestop products and systems have been specifically developed for these unique applications. Firestop putty and pillow products provide are easy to remove and reinstall while the patented EZ Path® system is the only reenterable solution that requires nothing to be removed or reinstalled making it the truly zero maintenance.

• CABLE SPRAY



Water-based, spray-applied coating used to limit flame propagation and improves flame spread characteristics for grouped electrical cables.



FEATURES & BENEFITS:

- Easy and economical to use.
- Water-based - easy cleanup, installation and disposal.
- Low friction formula - Less pump wear.
- Brushable for touch ups, spot repairs or small applications.

APPLICATIONS:

- Encapsulate grouped cables.
- Apply as fire breaks in cable tray runs.

TEST STANDARDS: FM3971, IEC 60331, IEC 60332



White Color



Permanent Solution



UPC# 730573	CAT. NO.	DESCRIPTION	QTY.	CASE QTY.	WEIGHT
07104	CS105	5 gal. Pail (1155 Cu. In., 19.0 L)	1	n/a	55.00 lbs (25 kg)

• ELECTRICAL BOX INSERTS



When used within metallic switch and receptacle boxes, inserts are UL Tested and Classified to permit larger boxes and reduced spacing.



FEATURES & BENEFITS:

- Easy installation! Just peel and stick to inside of box.
- Can be installed before or after wall is closed.
- Non-conductive liner face.
- Easy retrofit installation.
- Low profile for minimum impact on box volume.
- Tested and proven acoustical properties.
- One step installation saves time and labor.

APPLICATIONS:

- Single & multi-gang metallic boxes up to 14" (356 mm) long.
- Plastic & steel faceplates.
- 1 & 2 hr. wood or steel stud walls.

TEST STANDARDS: UL263



Red Color



Permanent Solution



UPC# 730573	CAT. NO.	DESCRIPTION	QTY.	CASE QTY.	WEIGHT
02500	EP44	3-3/4" x 3 3/4" x 1/8" (9.5 x 9.5 x .3 cm) insert	1	20	0.09 lbs (.04 kg)
02505	EP45	4-1/4" x 4-1/4" x 1/8" (10.8 x 10.8 x .3 cm) insert	1	20	0.10 lbs (.045 kg)

• **READY® SLEEVE**



A complete code compliant firestop sleeve assembly for new cable installations. Includes all mounting hardware and internal and external firestop sealing materials. Available in 1" (33 mm OD), 2" (60 mm OD), and 4" (114 mm OD) sizes with standard or large escutcheon plates.



FEATURES & BENEFITS:

- Complete! Includes sleeve, all mounting hardware, firestopping materials.
- Saves money by reducing expensive shop and field labor.
- Standard and large escutcheons available.
- Meets code requirements for internal/external firestop sealing.
- Meets code requirements for wall attachment.
- Built-in bushings protect cables.*
- Includes SpecSeal® Series SSP Intumescent Firestop Putty sufficient for 1" (25 mm) depth at both ends.

APPLICATIONS:

- Protect and seal cables routed through rated and non-rated walls & floors.
- All common constructions up to 10" (250 mm) thick.
- Available trade sizes 1" (33 mm OD), 2" (60 mm OD), 4" (114 mm OD).
- Standard small escutcheons for accurate gypsum board openings.
- Large escutcheons for concrete or masonry openings.

TEST STANDARDS: ASTM E814, UL 1479, CAN/ULC S115

■ Metallic Color



* Standard for 2"(60 mm OD) and 4"(114 mm OD) sizes. Separate bushing provided for 1" (25 mm).

UPC# 730573	CAT NO.	DESCRIPTION	QTY.	CASE QTY.	WEIGHT
20100	FS100	1" (25 mm) Firestop Sleeve	1	6	1 lbs (.45 kg)
20200	FS200	2" (51 mm) Firestop Sleeve	1	6	2 lbs (.90 kg)
20400	FS400	4" (102 mm) Firestop Sleeve	1	6	4 lbs (1.8 kg)
20201	FS201	2" (51 mm) w/ large escutcheon plates	1	n/a	2.90 (1.3 kg)
20401	FS401	4" (102 mm) w/ large escutcheon plates	1	n/a	4.80 (2.2 kg)



ELECTRICAL & DATACOM FIRESTOP SYSTEMS

• **READY® SPLIT SLEEVE**



Ready® Sleeve convenience for existing cable installations. Split sleeve and two-piece wall plates allow sleeve to be assembled around cables and locked into the wall or floor. Available in 1" (33 mm OD), 2" (60 mm OD), and 4" (114 mm OD) sizes.



FEATURES & BENEFITS:

- Complete! Includes split sleeve, all mounting hardware, firestopping materials.
- Over-sized plates for larger or irregular openings.
- Built-in bushings protect cables.
- Meets code requirements for internal/external firestop sealing.
- Optional wall attachment points provided for sleeve stabilization.
- Includes SpecSeal® Firestop Putty as well as split external firestop gasket.

APPLICATIONS:

- New or existing cable installations through walls or floors.
- All common constructions up to 10" (250 mm) thick.
- Available trade sizes 1" (33 mm OD), 2" (60 mm OD), 4" (114 mm OD).
- Oversized or irregular openings.

TEST STANDARDS: ASTM E814, UL 1479, CAN/ULC S115

■ Metallic Color



UPC# 730573	CAT NO.	DESCRIPTION	QTY.	CASE QTY.	WEIGHT
21000	FSR100	1" (25 mm) Split Firestop Sleeve	1	4	1.25 lbs (.6 kg)
22000	FSR200	2" (51 mm) Split Firestop Sleeve	1	4	2.50 lbs (1.1 kg)
24000	FSR400	4" (102 mm) Split Firestop Sleeve	1	4	6.25 lbs (2.8 kg)



• **FP INTUMESCENT FIRESTOP PLUG**



Designed for temporary or permanent sealing of conduit sleeves or suitably sized openings both with and without cables, through walls and floors.



FEATURES & BENEFITS:

- Fast and easy installation - no special tools required.
- Intumescent - expands in all directions for a tough, tight seal.
- Re-installable - easy retrofitting of cables.
- Soft and resilient foam - conforms to cable surfaces.
- Smoke resistant - superior air leakage ratings.
- Convenient - sized for 2" (51 mm) and 4" (102 mm) EMT or conduit sleeves.

APPLICATIONS:

- Conduit sleeves, 0 to 33% cable fill.
- Sealing of single or grouped cables of various types; power, voice, data.
- Seal 2" (51 mm) or 4" (102 mm) trade size steel sleeves or conduit sleeves.
- Blank openings through common construction such as concrete or gypsum board.

TEST STANDARDS: ASTM E814, UL 1479, CAN/ULC S115



UPC# 730573	CAT. NO.	DESCRIPTION	QTY.	CASE QTY.	WEIGHT
07202	FP200	Firestop Plug sized for 2 in. (51 mm) opening/sleeve	1	10	0.09 lbs (.04 kg)
07204	FP400	Firestop Plug sized for 4 in. (102 mm) opening/sleeve	1	10	0.10 (.045 kg)

• **SSP FIRESTOP PUTTY AND PUTTY PADS**



Non-hardening, intumescent putty is easily installed and removed making it the perfect choice for cable penetrations requiring occasional retrofitting. Can be externally applied to switch and receptacle boxes.



FEATURES & BENEFITS:

- Non-hardening for easy installation and retrofitting of cables.
- Two-stage intumescence provides aggressive expansion.
- Highly adhesive: stays put!
- Unaffected by humidity, condensation, water.
- Soft, pliable, easy to install.
- Tested and proven acoustical properties.
- No tools required.

APPLICATIONS:

- Small to medium openings through common constructions.
- Single or multiple cables for power, voice, data.
- Single or multiple cable trays for power, voice, data.
- Sleeved openings for cable bundles
- Conduits.



PAD FEATURES & BENEFITS:

- Fits common 4S box with no cutting or trimming.
- Poly liner allows hands-off, clean installation.

PAD APPLICATIONS:

- Single & multi-gang metallic boxes up to 14" (356 mm) long.
- A variety of non-metallic boxes.
- Plastic & steel faceplates.
- 1 & 2 hr. wood or steel stud walls.

TEST STANDARDS: ASTM E814, UL 1479, CAN/ULC S115, UL263



UPC# 730573	CAT. NO.	DESCRIPTION	QTY.	CASE QTY.	WEIGHT
02100	SSP100	36 Cu. In. Tube (.6 L)	1	6	2.3 lbs (1.04 kg)
02101	SSP28	24 Cu. In. Tube (.39 L)	1	1	1.85 lbs (.84 kg)
02200	SSP4S	7.25" x 7.25" x 3/16" (18.4 x 18.4 x .5 cm) pad	1	20	0.59 lbs (.27 kg)
02300	SSP9S	9.00" x 9.00" x 3/16" (22.9 x 22.9 x .5 cm) pad	1	20	0.99 lbs (.44 kg)





THE ULTIMATE HIGH

EZ-Path System

One-Piece Sleeves

For the Facility Owner...



Self-Adjusting Sealing Mechanism: Nothing to remove, replace, adjust or tighten.



Consistent Performance: Fire protection and smoke sealing not dependent on resealing.



Retrofittable: Split pathways and mounting hardware for use with previously installed cables.



For the Specifier...



Complete Mechanical Solution: NO sealant or putty required. Can be extended for thicker walls and ganged for increased capacity.



Complete Floor Solutions: From a handful of cables to a complete vertical backbone application.



For the Cable Installer and Network Professional...



Facilitates Cable Pulling: Smooth interior surfaces. No loose liners or rough edges.



Add Cables Easily: No unsealing and resealing allows remote cable pulls using a pull line.



No Cable Constriction: Cables are not squeezed. Little potential for cross-talk.

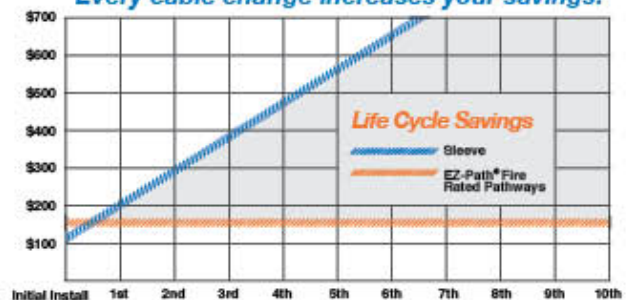


For Everyone...

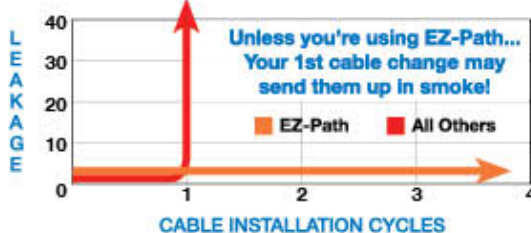
The Payback – The ONLY Cable Sleeve that Pays for Itself

With every other cable sleeve you continue to pay fire or smoke sealing costs every time you make a cable change. Only the EZ-Path System completely removes labor costs related to sealing, unsealing, and resealing cable penetrations.

Every cable change increases your savings!



Great Leakage Ratings Shouldn't Just Exist On Paper!



Some leakage ratings may look good on paper. But ask your supplier what happens if someone forgets to reinstall the putty? Stuff the foam back in? Tighten the ring on the constricting liner? Take the human element away. Be SAFE. Choose the EZ-Path System.

The EZ-Path System – Consistently great leakage ratings!

TRAFFIC SOLUTION

EZ-Path[®]
FIRESTOP GROMMET

For Healthcare...

Infection Control - Don't Pop that Ceiling Tile!

In healthcare the potential spread of infection is a major concern. All other sleeves require access to at least one side of every wall in order to add cables. Most require access to both sides. Thus every cable change has the potential to spread disease carrying dust, not to mention the cost of setting up containment at each and every opening.



Only the EZ-Path System requires no unsealing, resealing or adjustment of any kind. Pulling lines can be left in place and cables can be remotely pulled through multiple barriers. So no direct access is required other than the beginning and end of the pull. No other product offers this feature.

**The EZ-Path System –
Safety, convenience and economy.**

Smoke Sealing Cable Penetrations...



Restoring firestopping isn't enough – You MUST restore Smoke Sealing!

NFPA 70 National Electrical Code - Spread of Fire or Products of Combustion

300.21, 800.26, 830.26 require all cables installations through hollow spaces, vertical shafts, and ventilation or air-handling ducts to be made so that the possible spread of fire or the products of combustion (smoke) shall not be substantially increased.



This means that cable penetrations must be resealed. If your cable sleeves require materials to be reinstalled or internal sleeves to be twisted and constricted in order to restrict smoke leakage... Every time a cable change is made in your facility, you are at risk of a code violation if this action is not performed.

Similar provisions exist in the NFPA 101, "Life Safety Code" that may affect product selection in facilities subject to compliance with that particular code. For additional information please consult the referenced NFPA volumes and consult your local authorities having jurisdiction for any specific local requirements.

Contact STI Technical Services at 800.992.1180 for more specific information and request a copy of the UL letter discussing EZ-Path[®] suitability for this environment.

National Electric Code[®], NFPA 70[®] and NFPA 101[®], Life Safety Code[®] are registered trademarks of the National Fire Protection Association, Quincy, MA.

From 1 cable to 5,000 cables, we have your solution

Manage and Firestop your cables the **EZ** way with the EZ-Path[®] and EZ-Path[®] Firestop Grommet system

- ▶ No caulk, no putty, no hassles. Zero maintenance solution saves time and money, and looks great too!
- ▶ The only manufacturer to offer a complete no-caulk, no-putty solution. Factory metered doses ensure maximum fire and smoke protection and zero maintenance!



EZ-PATH® FIRESTOP GROMMET



*Small Cable Penetrations Through Fire-Rated Walls?
Eliminate Sleeves, Sealant, And Putty With The EZ-Path® Firestop Grommet*



* Formally Ready® Firestop Grommet

FEATURES & BENEFITS:

- Quick to install - 2 piece grommet snaps together for an easy installation.
- Economical - Eliminates Sleeves and the need for putty or sealant.
- Split design - Can be used with previously installed cables.
- Can be used for data cables (CAT5, CAT6), alarm, security and electrical cables.
- Made with Ultem® premium, plenum-grade material. Exceptional flame & heat resistance.

APPLICATIONS:

- One or more cables with total O.D. up to 0.27" (7 mm) for RFG1 or 0.53" (14 mm) for RFG2.
- 1 & 2 Hr rated gypsum board walls.
- Single Membrane or Through-Penetrations.

TEST STANDARDS: ASTM E814, UL 1479, CAN/ULC S115



UPO# 730573	CAT NO.	DESCRIPTION	QTY.	CASE QTY.	WEIGHT
25058	RFG1	Two-piece split cable grommet for small cable penetrations up to 0.27 in. (7 mm) O.D.	1 Blister Pack 10 Grommets per Blister	10 Blister Packs	1.00 lbs (.45 kg)
25059	RFG2	Two-piece split cable grommet for small cable penetrations up to 0.53 in. (14 mm) O.D.	1 Blister Pack 10 Grommets per Blister	10 Blister Packs	4.80 lbs (2.2 kg)



EZ-PATH® THE ULTIMATE HIGH-TRAFFIC SOLUTION



TEST STANDARDS: ASTM E814, UL 1479, CAN/ULC S115



	Series 22	Series 33	Series 44+
Height x Width Inches (mm)	1.5" x 1.5" (38 mm x 38 mm)	3.0" x 3.0" (76 mm x 76 mm)	4" x 4-5/8" (102 mm x 118 mm)
Length Inches (mm)	10.5" (267 mm)	10.5" (267 mm)	14" (356 mm)
Volume Expansion	40X	16X	16X
Can be Ganged	--	Up to 7	Up to 5 in walls Up to 16 in floors
Can be Lengthened	--	6" (152 mm) increments	6" (152 mm) increments
Insert into Cored Hole	2" (51 mm)	4" (102 mm)	6" (152 mm)
Attached to Conduit	--	4" (102 mm)	--
Fire Rated in Walls	Up to 4 hours	Up to 4 hours	Up to 4 hours
Fire Rated in Floors	--	Up to 4 hours	Up to 4 hours
Approx. Max Cable Capacity	25 ±	120 ±	268 ±
Approx. Max Cable Capacity (Ganged)	--	840 ±	1,340 ±
Approx. Max Cable Capacity (Grid)	--	--	4,288 ± in floors

Cable capacity estimates are based upon using CAT5. Cable diameters vary widely by manufacturer. Consult STI's cable estimator online for accurate estimates.

www.stifirestop.com/ez-path

Would you specify a product that can do only half the job or perhaps even less? If your specs call for anything other than the EZ-Path System, that's precisely what you are doing. Hard to believe, while several manufacturers offer solutions for common wall penetrations, only STI offers comprehensive solutions for both walls and floors.

Horizontal Cable Solutions

The EZ-Path System offers solutions that can handle from a dozen typical CAT6 cables up to 1,100... All through a single penetration. Accessories adapt the pathways to ganged configurations, thicker walls, retrofit with previously installed cables... All with totally mechanical solutions. No putty or sealant required.



Multiple Pathway Installations
+ Multi-Gang Wall Plates



Specialty Installation Options
+ Retrofit / Repair Wall Kit



Specialty Installation Options
+ Conduit Attachment Kit



Installations Through Thicker Walls
+ Extension Modules

Vertical Cable Solutions

Only STI's EZ-Path System offers practical solutions for vertical cable installations. The EZ-Path Series 33 pathway can handle up to 85 CAT6 cables with a quick and easy installation. Simply insert the pathway assembly into a 4" diameter opening and you are done. No fasteners required!

Need more capacity? The Series 44+ Pathway can accommodate 210 CAT6 cables and the rugged Modular Floor Grid System allows you to install up to 16 of these pathways using standard components for a total capacity of over 3,300 cables through a single penetration.

No matter what direction your cables are headed, STI's EZ-Path System can take you there with effective solutions no other manufacturer can match.



Custom Solutions

Where volume is sufficient, STI can provide custom solutions for your facilities or projects. Here are some examples of custom solutions we have provided to our customers:

- + Custom Colors
- + Custom Configurations
- + Expanded Capacity

Contact your local sales representative or STI Customer Service for more information.



* NOTE: For a complete list of EZ-Path® Kits & Accessories, see the full EZ-Path® brochure (ZSTI3154) or visit www.stifirestop.com

• FIRESTOP ACCESSORIES

STI has several accessories available for installing firestop. Caulk tubes, mineral wool boards and even warning labels for labeling your barriers.

UPC# 730573	CAT. NO.	DESCRIPTION	QTY.	CASE QTY.	WEIGHT
05001	SSAMW	Mineral Wool Boards (2) 2'x4'x1.5" Per box (5.08 x 10.16 x 3.81 cm)	1	-	12 lbs (5.4 kg)
05020	SSACG	Caulk Gun (11 oz.)	1	4	1.5 lbs (.7 kg)
05021	SSAQCG	29 oz. (858 ml) Caulk Gun	1	-	2.5 (1.1 kg)
05022	SSASCG	20 oz. (592 ml) Caulk Gun	1	-	2.9 (1.3 kg)
03775	SSWFT	Foil Tape 2" x 30'	1	6	0.44 (.2 kg)
09554	Z1005-892-CG	Firestop Penetration Warning Label (5 3/8" x 4 1/2") (13.65 x 11.43 cm)	1	1000/roll	0.01 (.005 kg)



NORTH AMERICA

Corporate Office
210 Evans Way
Somerville, NJ 08876 USA
Tel: +1 908 526 8000
Fax: +1 908 526 9623
Email: customerservice@stifirestop.com

EUROPE

Regional Office
118 Avenue de France
75013 Paris, France
Tel: +33 6 70 58 50 40
Email: ce_europe@stifirestop.com

MIDDLE EAST

Regional Office
P.O. Box: 22952
Dubai, UAE
Tel: +971 4 44 39 312
Email: ce_middle_east@stifirestop.com

CHINA

Regional Office
60 Huaili Road, Suite 202
Zhujiang New Town, Guangzhou China
Tel: +86 (20) 3804 9281
Fax: +86 (20) 3838 3081
Email: ce_greater_china@stifirestop.com

SINGAPORE

Regional Office
Thomson Road Post Office
P.O.Box 171
Singapore 915706
Tel: +65 9636 9000
Email: ce_south_east_asia@stifirestop.com

LATIN AMERICA

Regional Office
Av. Tancredo Neves, 450
Edificio Suarez Trade, 16° Andar
Salvador, BA 41820-901
Tel: +71 3340 0685
Email: ce_latin_america@stifirestop.com



SOMERVILLE, NJ 08876 USA • T: 800.992.1180 • F: 908.526.9623 • WWW.STIFIRESTOP.COM

ZSTI3113 - 0843