



PROTECTING LIVES  
AND PROPERTY  
AROUND THE WORLD



# STI...AN INDUSTRY LEADER

## Broadest Range of UL® Classified Firestop Systems


Marketed under the SpecSeal® and EZ-Path® brands, STI offers the most complete range of UL® Classified Systems.

Specified Technologies Inc. (STI) is an industry leader in developing innovative fire protection systems that help stop the spread of fire, smoke and toxic fumes. For over 30 years, our management team has worked hand in hand with the construction industry to create simple solutions to complex firestopping problems.

Our SpecSeal® and EZ-Path® product lines are engineered to deliver powerful performance. Because our system designs are user-driven, they are easier to apply. The result is simply designed, outstanding fire protection systems which often result in lower installed costs.

STI products and systems offer innovative firestop solutions for all types of new construction and retrofit applications. Since firestopping is our only business, we concentrate all our resources on providing the highest quality, fully tested, innovative firestopping solutions.





At STI, products are but one component of our value package. As a fully focused manufacturer we are committed to providing complete solutions to your Firestop needs and challenges. We invest the time to understand the unique needs of specific construction segments and applicators and then develop products, systems, and programs tailored to meet these needs. The results are industry-changing, innovative, patented technologies such as EZ-Path® Fire Rated Pathway and Triple S® two-stage intumescent sealant, or programs and services like our Barrier Management Program<sup>SM</sup> (BMP) for healthcare or the industry's first web-based "submittal builder." As a stable, growing, privately held company we control our future. We do what is right for the long term, not a quarterly earnings report. We remain committed to these values, our client partnerships, and the firestop industry.



Mr. Charbel H. Tagher  
President



## COMPANY HISTORY

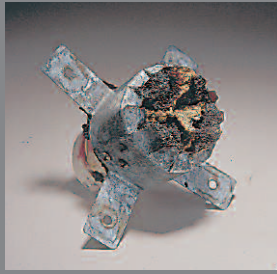
STI was founded in 1990 by industry insiders who felt they could provide better solutions to the emerging Firestop industry. With a goal of being the technology and innovation leader, the company reinvested heavily, especially in the areas of R&D and testing. In 1991, STI was the first manufacturer to introduce water-based intumescent technology. The industry followed. Soon after, STI patented the only two-stage intumescent technology. In the years following, STI launched an aggressive UL® testing program. With the largest and most complete offering of UL® Classified Systems, STI has solidly established itself as the leader in technology and testing.

STI is recognized as an industry leader and remains a privately held company with over 25 factory representatives, over 30 independent sales representative agencies, and more than a thousand distribution points across the United States. STI has an office in Bahrain and international representation on all continents. Much of the original management remains in place, working side by side with a team that supports today's business and tomorrow's growth.

# PATENTED, INNOVATIVE TECHNOLOGY

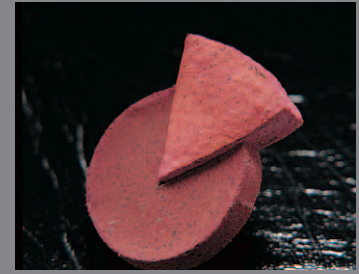


After two hours, the exposed side of the SpecSeal® collar shows densely compacted char.



The unexposed side shows the SpecSeal® collar completely crushing and sealing the plastic pipe.

Our patented two-stage intumescent technology expands rapidly to close off the path of smoke and hot gasses of the advancing fire.



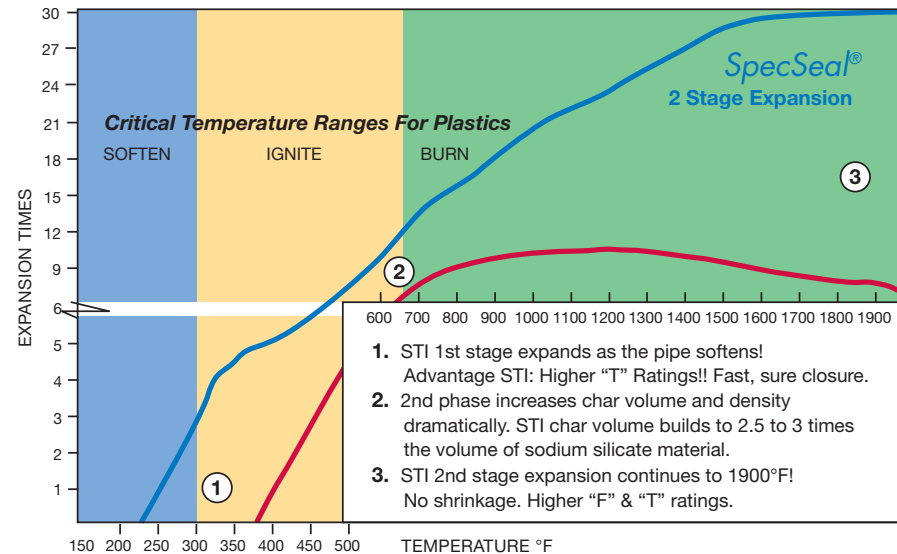
Many firestopping products look exactly alike. However, there is one single ingredient that separates STI from its competitors. TECHNOLOGY. It's the engineering time and investment that STI provides to design revolutionary products from the ground up.

## SPECSEAL® PRODUCTS

The SpecSeal® line of products combine the industry's fastest intumescence (expansion) with innovative passive materials to address complex firestopping needs. STI developed its patented two-stage expansion because construction materials such as plastics may burn or melt at low temperatures while other materials such as fiberglass insulation and certain metals may burn at higher temperatures.

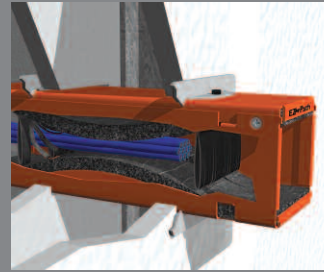
## SPECSEAL® TWO-STAGE INTUMESCENT TECHNOLOGY

The first stage requires significantly less heat to begin expansion. The second stage continues the expansion process to temperatures well over 1,000°F.





Whether empty or 100% visually filled, the patented technology of EZ-Path® ensures the pathway remains fire and smoke compliant.



EZ-Path® expands quickly under fire to seal the pathway.

Continually changing technology, and the expanding data and communications needs of many industries, result in constant cable additions and changes penetrating rated barriers. Existing firestopping methods typically use sleeves filled with a non-hardening putty to facilitate cable retrofits. As cables are added and firestop is removed, conventional sleeves may become non-compliant.

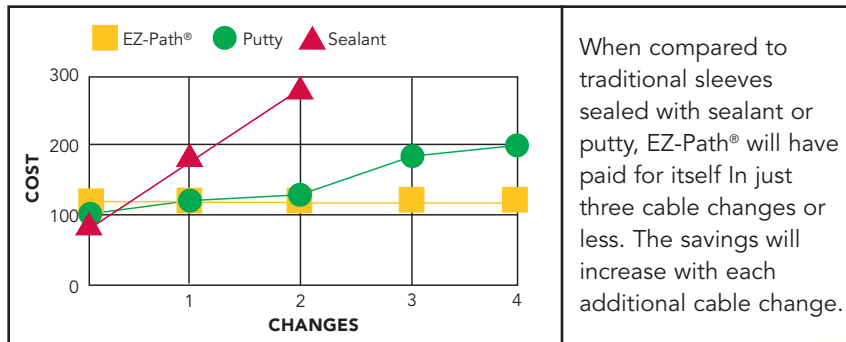
### EZ-PATH® CABLE PATHWAY

EZ-Path® eliminates these problems. Its revolutionary built-in firestop system is the only solution that provides fire and smoke compliance from installation (empty) to 100% visual fill — 100% of the time.

U.S. Patent 6,732,481

### REDUCES LIFE CYCLE COSTS

Innovative technology significantly improves fire and smoke compliance while reducing life cycle costs.



When compared to traditional sleeves sealed with sealant or putty, EZ-Path® will have paid for itself in just three cable changes or less. The savings will increase with each additional cable change.

# CODES REQUIRE FIRESTOPPING MATERIALS

## DETECTION

Early warnings for egress and fighting fire.



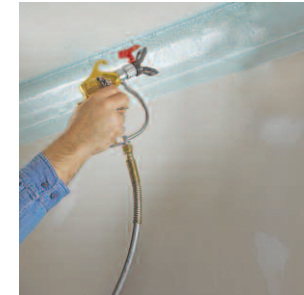
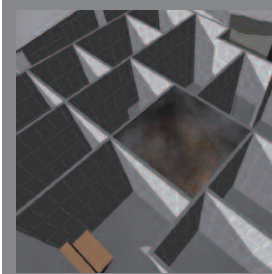
## SUPPRESSION

Even when a fire is quickly extinguished, it still produces toxic smoke and gases, which roam freely without containment. Black smoke is allowed to roam, obscures vision, impairing wayfinding process and egress. Sprinkler water mixes with toxic gases creating hydrochloric acid steam, which when inhaled, cauterizes the tissue in the lungs, suffocating the victim. This type of smoke inhalation is the leading cause of smoke related firefighter deaths.



## COMPARTMENTATION

Compartmentation utilizes fire barriers to divide building space into smaller units that confine the products of combustion to their point of origin. They are intended as a last resort if both prevention and detection/suppression fail.



As evidenced by a number of well publicized fires, smoke and flames find their way through a building at an incredible speed. Even the best active fire prevention systems like smoke detectors, alarms and sprinklers, can be rendered ineffective by lack of power, water pressure, or improper maintenance. The result can be disastrous — loss of property, business, and worst of all, loss of life. Because “Active” fire prevention methods can fail when they are needed most, the codes now require the use of “Passive” fire prevention systems known as “Firestopping Materials.” Their purpose is to compartmentalize and contain a fire to its smallest possible area without the help of any secondary systems.

# RESEARCH AND TESTING

Every product in the STI family was conceptualized before it was developed.



By applying a scientific approach to products and systems development, STI has accomplished what many can only contemplate — total system and product integration for a wide range of firestopping solutions.

Testing in a laboratory and application at a jobsite are two very different things. STI engineers its products and systems to reflect real world jobsite conditions.

With an arsenal of the industry's most potent intumescent technology, and a line of integrated products, STI can reduce complex firestopping situations to the simplest elements.

Consequently, STI can handle the broadest ranges of applications while offering substantial installed cost savings. In fact, in actual jobsite studies, it has been shown that using STI systems can produce savings of as much as 30% versus other brands.

## **ALL SYSTEMS TESTED TO HIGHEST INDUSTRY STANDARDS**

All STI systems are third-party tested to the highest industry standards and provide the best flame ("F") and thermal ("T") ratings in the business. At STI, we take things a step further. Because smoke can be as deadly as fire, we also test for leakage ("L") ratings.

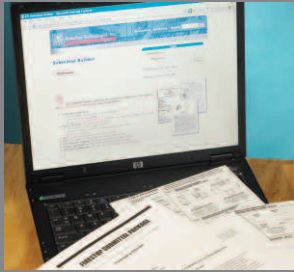


# MARKETS AND CUSTOMERS

STI's products and services can be found in some of the largest and most prestigious projects in the United States and around the world.



# CUSTOMER SUPPORT



[www.stifirestop.com](http://www.stifirestop.com)

Toll Free Help Line: **1-800-992-1180**  
Techline e-mail: **techserv@stifirestop.com**



An essential element to success is responsive service. Starting with your initial inquiry, STI service encompasses far more than the traditional activities of order entry and shipping.

## **TOLL-FREE TECHNICAL SUPPORT**

Immediate accessibility is critical in today's fast moving business environment. As an industry leader, STI provides a professionally staffed engineering department for technical support. They provide product and application information, answer questions about safety and technical issues, provide CAD details, and are available to walk the jobsite and troubleshoot your more complex problems.

## **CUSTOMER SERVICE**

At STI, customer support is as important as the product itself. Whether it is as simple as returning your calls, expediting a delivery, or fielding technical questions, you can be sure that your needs will be met with a consistent level of courtesy and professionalism.

## **WWW.STIFIRESTOP.COM**

All our product information, MSDS sheets, product brochures, UL® Classified Systems, and Technical updates are available on our website.

- Search by product
- Search by application
- Build a submittal

UL® Classified Systems can easily be searched by field condition and converted into submittals using STI's electronic submittal builder.

# PRODUCTS AND SERVICES



Firestop products and systems are highly dependent on proper design and installation for success in an actual fire. They are the only code required life-safety item installed by every trade.

## TRAINING

STI's Firestop Instructional Training<sup>SM</sup> (FIT) competency-based training programs are designed for designers, installers, and owners. There are two levels of training, each geared for the attendee. Our Level 1 program is a 4-hour installer focused program, while our Level 2 program was developed for supervisors, facility managers or inspectors who will train and supervise installers. Our FIT Level I and II courses are registered with the American Institute of Architects and worth 3 and 15 AIA/CES Learning Units (HSW). Courses are taught at our corporate training facility in Somerville, NJ as well as various off-site locations across the country. Notable attendees have included: The Mayo Clinic, Bovis Lend Lease, and Carolinas Healthcare Systems.



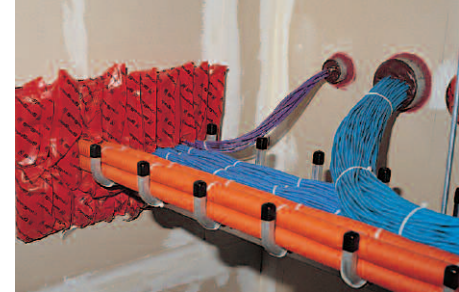
Specified Technologies, Inc. is a registered provider with The American Institute of Architects Continuing Education Systems. Credit earned upon completion of this program will be reported to CES Records for AIA members. Certificates of Completion for non-AIA members are available on request.

## BARRIER MANAGEMENT PROGRAM<sup>SM</sup> (BMP)

STI offers Barrier Management Programs<sup>SM</sup> to ensure fire barriers are always compliant. The programs have simplified maintaining fire barriers, dramatically improved inspections and saved thousands of dollars in healthcare and institutional facilities.

*"No one had ever taken the time and effort to offer a complete and working solution in a package the way STI did. After seeing their program and applications it was very easy to conclude that this type of program offers substantial value in risk management of properties."*

— **Danny G. Murtagh**, Director of Engineering for Boston Properties, San Francisco Region



The SpecSeal® and EZ-Path® product lines are engineered to deliver powerful performance. Because STI's system designs are user-driven, they are easier to apply. The result is simply designed, outstanding fire protection systems with significantly lower installed costs. STI products and systems offer innovative firestop solutions for all types of new construction and retrofit applications.

### **THROUGH PENETRATIONS**

Whether the applications are plumbing and mechanical, or electrical and datacom, utilizing combustible or noncombustible penetrants, STI has the products and systems to handle even the most challenging through-penetration needs.

### **HIGH-TRAFFIC™ CABLE PENETRATIONS**

Engineered to meet the constantly changing needs of the datacom industry, SpecSeal® and EZ-Path® products utilize innovative technology to deliver powerful firestop performance and life cycle cost savings vs traditional products in High-Traffic™ cable applications.

### **CONSTRUCTION JOINTS**

For head of wall and general construction joint applications with movement (dynamic) or no appreciable movement (static), STI has the systems, designs, and products to help architects, specifiers, and installers do the job right. For curtain wall applications, STI offers the largest and most complete base of UL® Classified curtain wall systems in the industry.



200 Evans Way  
Somerville, NJ 08876  
Toll Free: 800-992-1180  
Fax: (908) 526-9623  
e-mail: [specseal@stifirestop.com](mailto:specseal@stifirestop.com)  
[www.stifirestop.com](http://www.stifirestop.com)

SpecSeal®, EZ-Path® and Triple S® are registered trademarks of Specified Technologies Inc.  
High-Traffic™ is a trademark of Specified Technologies Inc.  
Firestop Instructional Training (FIT<sup>SM</sup>) and Barrier Management Program<sup>SM</sup> are service marks of Specified Technologies Inc.  
UL® is a registered trademark of Underwriters Laboratories, Inc.