



# ***FIRESTOPPING***

***SOLUTIONS FOR DATA, COMMUNICATIONS,  
SECURITY AND ELECTRICAL APPLICATIONS***

## TABLE OF CONTENTS

### Re-Enterable Solutions

EZ-Path® Series 22



EZ-Path® Series 33



EZ-Path® Series 44+



Ready® Firestop Split-Sleeve



Ready® Firestop Sleeve



Firestop Plugs



SSP Putty



SSB Pillows



### Fail Safe Firestop Solution


 The only **zero maintenance** fire-rated cabling solution:  
 Nothing to remove, reinstall or retighten.

### Permanent Solutions

EZ-Path® Firestop Grommet



SSP Firestop Putty Pads



Electrical Box Inserts



SSS Intumescent Sealant



LCI Intumescent Sealant



LC Endothermic Sealant



SIL Silicone Firestop Sealant



Composite Sheet



SSM Firestop Mortar



Cable Spray



Accessories



# Safety & Code Compliance

## Innovative Firestop Solutions for Data, Communications, Security and Electrical Applications

### SERVICE

Building, Electrical, and Safety Codes have specific provisions for protection of penetrations and openings in fire-rated construction to keep fire, smoke, and superheated gasses from spreading unchecked. STI products and solutions are well suited to the task and tested to applicable standards. Beyond products, STI's expertise is only a click or call away via our factory applications engineers or our local territorial field staff.

### TECHNOLOGY

The endless variety of penetrants, construction designs, and materials can pose a challenge when it comes to fire protection. STI is solely focused on providing the solutions required for this challenging market. STI brings to bear an unmatched level of materials knowledge and expertise assuring you of the best possible solutions to your firestopping needs.

### INNOVATION

For over 20 years, STI has been a leader in the development and implementation of firestop materials. From the industry's first graphite-based intumescent, water-based sealant to the EZ-Path System, the world's most advanced cable firestop system, STI has been the unchallenged leader in development of products and systems for the electrical, data, communications, and security markets.

## Choosing the Right Product for Your High-Traffic® Application

The chart below outlines the product application choices.

Cable Change Frequency	Penetration Opening	
	Small	Large
More Changes	EZ-Path	EZ-Path
Less Changes	Ready® Sleeve w/ Putty	Pillows



# THE ULTIMATE HIGH

## EZ-Path System

## One-Piece Sleeves

### For the Facility Owner...



**Self-Adjusting Sealing Mechanism:** Nothing to remove, replace, adjust or tighten.



**Consistent Performance:** Fire protection and smoke sealing not dependent on resealing.



**Retrofittable:** Split pathways and mounting hardware for use with previously installed cables.



### For the Specifier...



**Complete Mechanical Solution:** NO sealant or putty required. Can be extended for thicker walls, and ganged for increased capacity.



**Complete Floor Solutions:** From a handful of cables to a complete vertical backbone application.



### For the Cable Installer and Network Professional...



**Facilitates Cable Pulling:** Smooth interior surfaces. No loose liners or rough edges.



**Add Cables Easily:** No unsealing and resealing allows remote cable pulls using a pull line.



**No Cable Constriction:** Cables are not squeezed. Little potential for cross-talk.

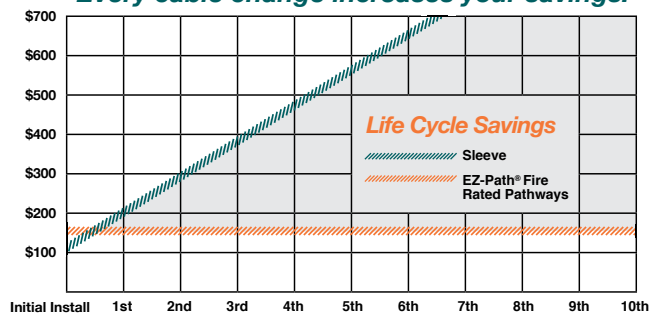


### For Everyone...

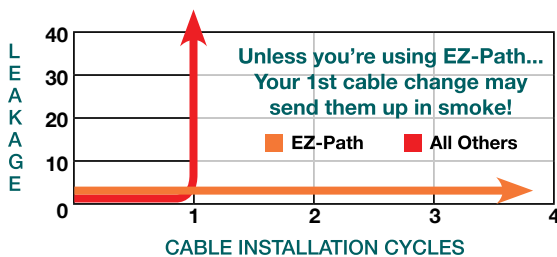
#### The Payback – The ONLY Cable Sleeve that Pays for Itself

With every other cable sleeve you continue to pay fire or smoke sealing costs every time you make a cable change. Only the EZ-Path System completely removes labor costs related to sealing, unsealing, and resealing cable penetrations.

#### Every cable change increases your savings!



### Great Leakage Ratings Shouldn't Just Exist On Paper!



Some leakage ratings may look good on paper. But ask your supplier what happens if someone forgets to reinstall the putty? Stuff the foam back in? Tighten the ring on the constricting liner? Take the human element away. Be SAFE. Choose the EZ-Path System.

**The EZ-Path System – Consistently great leakage ratings!**

# TRAFFIC SOLUTION



## For Healthcare...

### Infection Control - Don't Pop that Ceiling Tile!

In healthcare the potential spread of infection is a major concern. All other sleeves require access to at least one side of every wall in order to add cables. Most require access to both sides. Thus every cable change has the potential to spread disease carrying dust, not to mention the cost of setting up containment at each and every opening.



Only the EZ-Path System requires no unsealing, resealing or adjustment of any kind. Pulling lines can be left in place and cables can be remotely pulled through multiple barriers. So no direct access is required other than the beginning and end of the pull. No other product offers this feature.

**The EZ-Path System –  
Safety, convenience and economy.**

## Smoke Sealing Cable Penetrations...



### Restoring firestopping isn't enough – You MUST restore Smoke Sealing!

NFPA 70 National Electrical Code - Spread of Fire or Products of Combustion

300.21, 800.26, 830.26 require all cables installations through hollow spaces, vertical shafts, and ventilation or air-handling ducts to be made so that the possible spread of fire or the products of combustion (smoke) shall not be substantially increased.



This means that cable penetrations must be resealed. If your cable sleeves require materials to be reinstalled or internal sleeves to be twisted and constricted in order to restrict smoke leakage... Every time a cable change is made in your facility, you are at risk of a code violation if this action is not performed.

Similar provisions exist in the NFPA 101, "Life Safety Code" that may affect product selection in facilities subject to compliance with that particular code. For additional information please consult the referenced NFPA volumes and consult your local authorities having jurisdiction for any specific local requirements.

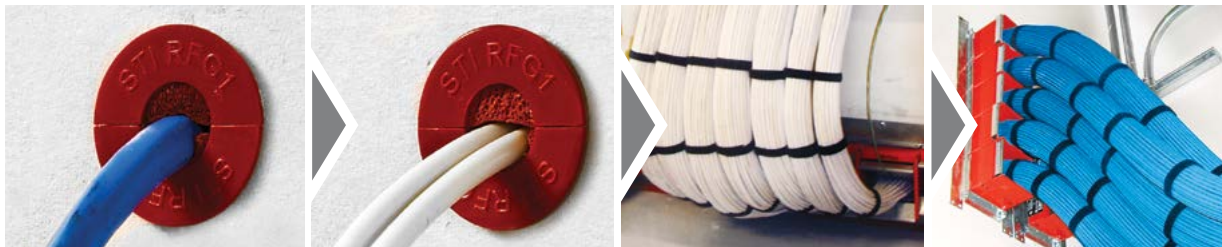
Contact STI Technical Services at 800.992.1180 for more specific information and request a copy of the UL letter discussing EZ-Path® suitability for this environment.

*National Electric Code®, NFPA 70® and NFPA 101®, Life Safety Code® are registered trademarks of the National Fire Protection Association, Quincy, MA.*

## From 1 cable to 5,000 cables, we have your solution

### Manage and Firestop your cables the **EZ** way with the EZ-Path® and EZ-Path® Firestop Grommet system

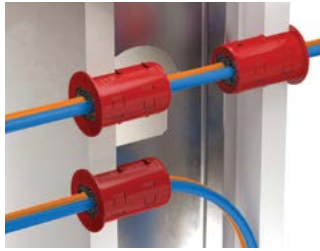
- ▶ No caulk, no putty, no hassles. Zero maintenance solution saves time and money, and looks great too!
- ▶ The only manufacturer to offer a complete no-caulk, no-putty solution. Factory metered doses ensure maximum fire and smoke protection and zero maintenance!



**EZ-PATH® FIRESTOP GROMMET**



*Small Cable Penetrations Through Fire-Rated Walls?  
Eliminate Sleeves, Sealant, And Putty With The EZ-Path® Firestop Grommet*



\* Formally Ready® Firestop Grommet

**FEATURES & BENEFITS:**

- Quick to install - 2 piece grommet snaps together for an easy installation.
- Economical - Eliminates Sleeves and the need for putty or sealant.
- Split design - Can be used with previously installed cables.
- Can be used for data cables (CAT5, CAT6), alarm, security and electrical cables.
- Made with Ultem® premium, plenum-grade material. Exceptional flame & heat resistance.

**APPLICATIONS:**

- One or more cables with total O.D. up to 0.27" (7 mm) for RFG1 or 0.53" (14 mm) for RFG2.
- 1 & 2 Hr rated gypsum board walls.
- Single Membrane or Through-Penetrations.



UPC# 730573	CAT NO.	DESCRIPTION	QTY.	CASE QTY.	WEIGHT
25058	RFG1	Two-piece split cable grommet for small cable penetrations up to 0.27 in. (7 mm) O.D.	1 Blister Pack 10 Grommets per Blister	10 Blister Packs	1.00 lbs (.45 kg)
25059	RFG2	Two-piece split cable grommet for small cable penetrations up to 0.53 in. (14 mm) O.D.	1 Blister Pack 10 Grommets per Blister	10 Blister Packs	4.80 lbs (2.2 kg)



**EZ-PATH® THE ULTIMATE HIGH-TRAFFIC SOLUTION**



**Series 22**

**Series 33**

**Series 44+**

	Series 22	Series 33	Series 44+
Height x Width Inches (mm)	1.5" x 1.5" (38 mm x 38 mm)	3.0" x 3.0" (76 mm x 76 mm)	4" x 4-5/8" (102 mm x 118 mm)
Length Inches (mm)	10.5" (267 mm)	10.5" (267 mm)	14" (356 mm)
Volume Expansion	40X	16X	16X
Can be Ganged	--	Up to 7	Up to 5 in walls Up to 16 in floors
Can be Lengthened	--	6" (152 mm) increments	6" (152 mm) increments
Insert into Cored Hole	2" (51 mm)	4" (102 mm)	6" (152 mm)
Attached to Conduit	--	4" (102 mm)	--
Fire Rated in Walls	Up to 4 hours	Up to 4 hours	Up to 4 hours
Fire Rated in Floors	--	Up to 4 hours	Up to 4 hours
Approx. Max Cable Capacity	25 ±	120 ±	268 ±
Approx. Max Cable Capacity (Ganged)	--	840 ±	1,340 ±
Approx. Max Cable Capacity (Grid)	--	--	4,288 ± in floors

Cable capacity estimates are based upon using CAT5. Cable diameters vary widely by manufacturer. Consult STI's cable estimator online for accurate estimates.

[www.stifirestop.com/ez-path](http://www.stifirestop.com/ez-path)

Would you specify a product that can do only half the job or perhaps even less? If your specs call for anything other than the EZ-Path System, that's precisely what you are doing. Hard to believe, while several manufacturers offer solutions for common wall penetrations, only STI offers comprehensive solutions for both walls and floors.

### Horizontal Cable Solutions

The EZ-Path System offers solutions that can handle from a dozen typical CAT6 cables up to 1,100... All through a single penetration. Accessories adapt the pathways to ganged configurations, thicker walls, retrofit with previously installed cables... All with totally mechanical solutions. No putty or sealant required.



**Multiple Pathway Installations**  
+ Multi-Gang Wall Plates



**Specialty Installation Options**  
+ Retrofit / Repair Wall Kit



**Specialty Installation Options**  
+ Conduit Attachment Kit



**Installations Through Thicker Walls**  
+ Extension Modules

### Vertical Cable Solutions

Only STI's EZ-Path System offers practical solutions for vertical cable installations. The EZ-Path Series 33 pathway can handle up to 85 CAT6 cables with a quick and easy installation. Simply insert the pathway assembly into a 4" diameter opening and you are done. No fasteners required!

Need more capacity? The Series 44+ Pathway can accommodate 210 CAT6 cables and the rugged Modular Floor Grid System allows you to install up to 16 of these pathways using standard components for a total capacity of over 3,300 cables through a single penetration.

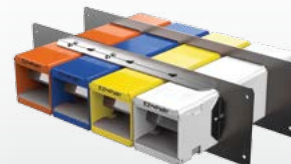
No matter what direction your cables are headed, STI's EZ-Path System can take you there with effective solutions no other manufacturer can match.



### Custom Solutions

Where volume is sufficient, STI can provide custom solutions for your facilities or projects. Here are some examples of custom solutions we have provided to our customers:

- + Custom Colors
- + Custom Configurations
- + Expanded Capacity



Contact your local sales representative or STI Customer Service for more information.



**\* NOTE: For a complete list of EZ-Path® Kits & Accessories, see the full EZ-Path® brochure (ZSTI3154) or visit [www.stifirestop.com](http://www.stifirestop.com)**

• **READY® SLEEVE**



*A complete code compliant firestop sleeve assembly for new cable installations. Includes all mounting hardware and internal and external firestop sealing materials. Available in 1" (33 mm OD), 2" (60 mm OD), and 4" (114 mm OD) sizes with standard or large escutcheon plates.*



**FEATURES & BENEFITS:**

- Complete! Includes sleeve, all mounting hardware, firestopping materials.
- Saves money by reducing expensive shop and field labor.
- Standard and large escutcheons available.
- Meets code requirements for internal/external firestop sealing.
- Meets code requirements for wall attachment.
- Built-in bushings protect cables.\*
- Includes SpecSeal® Series SSP Intumescent Firestop Putty sufficient for 1" (25 mm) depth at both ends.
- UL Classified (2 hr and up to 4 hr.)

**APPLICATIONS:**

- Protect and seal cables routed through rated and non-rated walls & floors.
- All common constructions up to 10" (250 mm) thick.
- Available trade sizes 1" (33 mm OD), 2" (60 mm OD), 4" (114 mm OD).
- Standard small escutcheons for accurate gypsum board openings.
- Large escutcheons for concrete or masonry openings.



■ Bare Metal Color



*Re-Enterable Solution*

\* Standard for 2"(60 mm OD) and 4"(114 mm OD) sizes. Separate bushing provided for 1" (25 mm).

UPC# 730573	CAT NO.	DESCRIPTION	QTY.	CASE QTY.	WEIGHT
20100	FS100	1" (25 mm) Firestop Sleeve	1	6	1 lbs (.45 kg)
20200	FS200	2" (51 mm) Firestop Sleeve	1	6	2 lbs (.90 kg)
20400	FS400	4" (102 mm) Firestop Sleeve	1	6	4 lbs (1.8 kg)
20201	FS201	2" (51 mm) w/ large escutcheon plates	1	n/a	2.90 (1.3 kg)
20401	FS401	4" (102 mm) w/ large escutcheon plates	1	n/a	4.80 (2.2 kg)



• **READY® SPLIT SLEEVE**



*Ready® Sleeve convenience for existing cable installations. Split sleeve and two-piece wall plates allow sleeve to be assembled around cables and locked into the wall or floor. Available in 1" (33 mm OD), 2" (60 mm OD), and 4" (114 mm OD) sizes.*



**FEATURES & BENEFITS:**

- Complete! Includes split sleeve, all mounting hardware, firestopping materials.
- Over-sized plates for larger or irregular openings.
- Built-in bushings protect cables.
- Meets code requirements for internal/external firestop sealing.
- Optional wall attachment points provided for sleeve stabilization.
- Includes SpecSeal® Firestop Putty as well as split external firestop gasket.
- UL Classified (2 hr and up to 4 hr ).

**APPLICATIONS:**

- New or existing cable installations through walls or floors.
- All common constructions up to 10" (250 mm) thick.
- Available trade sizes 1" (33 mm OD), 2" (60 mm OD), 4" (114 mm OD).
- Oversized or irregular openings.



■ Bare Metal Color



*Re-Enterable Solution*

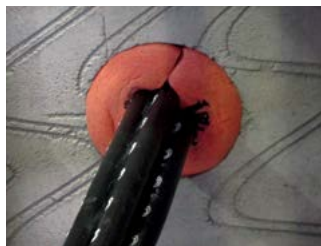
UPC# 730573	CAT NO.	DESCRIPTION	QTY.	CASE QTY.	WEIGHT
21000	FSR100	1" (25 mm) Split Firestop Sleeve	1	4	1.25 lbs (.6 kg)
22000	FSR200	2" (51 mm) Split Firestop Sleeve	1	4	2.50 lbs (1.1 kg)
24000	FSR400	4" (102 mm) Split Firestop Sleeve	1	4	6.25 lbs (2.8 kg)



**FIRESTOP PLUG**



*SpecSeal® Series FP Intumescent Firestop Plugs are designed for temporary or permanent sealing of single or grouped cables and blank openings through common construction such as concrete or gypsum board.*



**FEATURES & BENEFITS:**

- Fast and easy installation - no special tools required
- Intumescent - expands in all directions for a tough, tight seal
- Re-installable - easy retrofitting of cables
- Red color - for easy identification and inspection
- Soft and resilient foam - conforms to cable surfaces
- Smoke resistant - superior air leakage ratings
- Convenient - sized for 2" (51 mm) and 4" (102 mm) EMT or conduit sleeves

**APPLICATIONS:**

- Blank sleeves to 33% cable fill
- Sealing of single or grouped cables of various types; power, voice, data
- Seal 2" (51 mm) or 4" (102 mm) trade size steel sleeves or conduit sleeves
- Blank openings through common construction such as concrete or gypsum board

 Red Color



UPC# 730573	CAT. NO.	DESCRIPTION	QTY.	CASE QTY.	WEIGHT
07202	FP200	Firestop Plug sized for 2 in. (51 mm) opening/sleeve	1	10	0.09 lbs (.04 kg)
07204	FP400	Firestop Plug sized for 4 in. (102 mm) opening/sleeve	1	10	0.10 (.045 kg)



**SSP FIRESTOP PUTTY**



*Non-hardening, intumescent putty is easily installed and removed making it the perfect choice for cable penetrations requiring occasional retrofitting.*



**FEATURES & BENEFITS:**

- Non-hardening for easy installation and retrofitting of cables.
- Two-stage intumescence provides aggressive expansion.
- Highly adhesive: stays put!
- Unaffected by humidity, condensation, water.
- Soft, pliable, easy to install.
- Tested and proven acoustical properties.
- No tools required.
- UL Classified (up to 3 hr.)
- FM Approved.

**APPLICATIONS:**

- Small to medium openings through common constructions.
- Single or multiple cables for power, voice, data.
- Single or multiple cable trays for power, voice, data.
- Sleeved openings for cable bundles
- Conduits.

 Red Color



UPC# 730573	CAT NO.	DESCRIPTION	QTY.	CASE QTY.	WEIGHT
02100	SSP100	36 Cu. In. Tube (.6 L)	1	6	2.3 lbs (1.04 kg)
02101	SSP28	24 Cu. In. Tube (.39 L)	1	1	1.85 lbs (.84 kg)



• **SSB INTUMESCENT FIRESTOP PILLOWS**



*Compressible cushions can be easily installed and removed. The perfect firestop solution for medium to large openings including cable bundles, cable trays, bus ducts and multiple conduits.*



**FEATURES & BENEFITS:**

- Intumescent - expands in all directions for a tough, tight seal.
- Re-installable for easy retrofitting of cables.
- Single side application makes installation easy for tough access openings.
- Heat-sealed poly cover protects core and makes pillows slide in and out with ease.
- Superior air leakage ratings!
- Broad base of tested systems.
- UL Classified (up to 4 hr.).
- FM Approved.

**APPLICATIONS:**

- Medium to large openings through common constructions.
- Loose cable for power, voice, data.
- Single or multiple cable trays for power, voice, data.
- Multiple metallic conduits & tubing.
- Multiple, mixed penetrants of all types.
- Bus ducts.

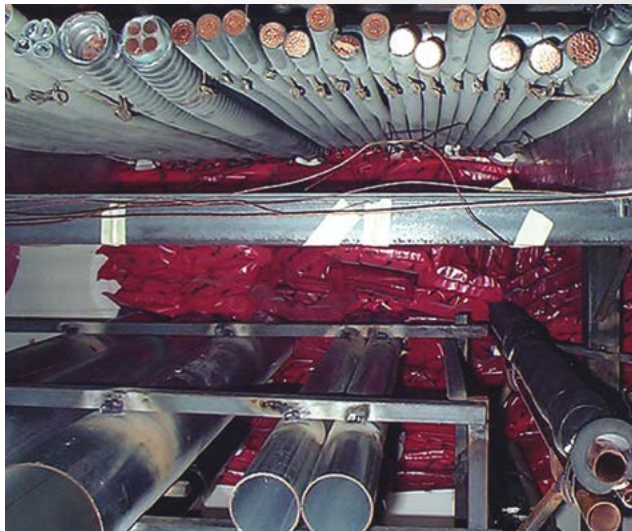


■ Red Color
  Re-Enterable Solution
 ACOUSTICAL  
STC 60 In STC 60-Rated Wall Assembly

UPC# 730573	CAT. NO.	DESCRIPTION	QTY.	CASE QTY.	WEIGHT
06140	SSB14	1"x 4"x 9" (2.5 x 10 x 23 cm)	1	20	0.18 lbs (.08 kg)
06240	SSB24	2"x 4"x 9" (5.0 x 10 x 23 cm)	1	10	0.27 lbs (.12 kg)
06260	SSB26	2"x 6"x 9" (5.0 x 15 x 23 cm)	1	22	0.35 lbs (.16 kg)
06360	SSB36	3"x 6"x 9" (7.6 x 15 x 23 cm)	1	16	0.48 lbs (.22 kg)



**SpecSeal® Super System – Firestopping Solution for Multiple Penetrants**



SpecSeal® Super System UL pre-test assembly

- ▶ **Outstanding firestopping flexibility:**  
For non-standard or unusual conditions often encountered in existing building and retrofit applications.
- ▶ **Excellent new construction flexibility:**  
For designers who want a large or a single opening with multiple penetrants.
- ▶ **Economical, retrofittable intumescent pillows:**  
Forms a tough, tight seal against smoke and flames.
- ▶ **UL® tested and Classified:**  
Protection for metallic and non-metallic penetrants in openings up to 18 square feet.

**ELECTRICAL BOX INSERTS**



*When used within metallic switch and receptacle boxes, inserts are UL Tested and Classified to permit larger boxes and reduced spacing.*



**FEATURES & BENEFITS:**

- Easy installation! Just peel and stick to inside of box.
- Can be installed before or after wall is closed.
- Non-conductive liner face.
- Easy retrofit installation.
- Low profile for minimum impact on box volume.
- Tested and proven acoustical properties.
- One step installation saves time and labor.

**APPLICATIONS:**

- Single & multi-gang metallic boxes up to 14" (356 mm) long.
- Plastic & steel faceplates.
- 1 & 2 hr. wood or steel stud walls.



Red Color



**ACOUSTICAL**  
STC **64** In STC 64-Rated Wall Assembly

UPC# 730573	CAT. NO.	DESCRIPTION	QTY.	CASE QTY.	WEIGHT
02500	EP44	3-3/4" x 3 3/4" x 1/8" (9.5 x 9.5 x .3 cm) insert	1	20	0.09 lbs (.04 kg)
02505	EP45	4-1/4" x 4-1/4" x 1/8" (10.8 x 10.8 x .3 cm) insert	1	20	0.10 lbs (.045 kg)



**SSP FIRESTOP PUTTY PADS**



*Externally applied to switch and receptacle boxes, pads are UL Tested and Classified to permit larger boxes and reduced spacing in gypsum board walls.*



**FEATURES & BENEFITS:**

- Fits common 4S box with no cutting or trimming.
- Two-Stage intumescence provides aggressive expansion.
- Highly adhesive: stays put.
- Unaffected by humidity, condensation, water.
- Soft, pliable, easy to install.
- Tested and proven acoustical properties.
- Poly liner allows hands-off, clean installation.

**APPLICATIONS:**

- Single & multi-gang metallic boxes up to 14" (356 mm) long.
- A variety of non-metallic boxes.
- Plastic & steel faceplates.
- 1 & 2 hr. wood or steel stud walls.

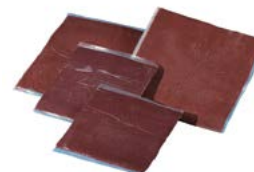


Red Color



**ACOUSTICAL**  
STC **62** In STC 62-Rated Wall Assembly

UPC# 730573	CAT NO.	DESCRIPTION	QTY.	CASE QTY.	WEIGHT
02200	SSP4S	7.25" x 7.25" x 3/16" (18.4 x 18.4 x .5 cm) pad	1	20	0.59 lbs (.27 kg)
02300	SSP9S	9.00" x 9.00" x 3/16" (22.9 x 22.9 x .5 cm) pad	1	20	0.99 lbs (.44 kg)



• **TRIPLE S® INTUMESCENT SEALANT**



*Premium grade, water-based firestop sealant featuring STI's patented two-stage intumescent technology. The perfect choice for the broadest array of combustibile and noncombustibile electrical penetrants requiring a permanent, durable seal.*



**FEATURES & BENEFITS:**

- Suitable for all forms of construction including industrial and complex commercial and institutional facilities.
- Patented two-stage intumescent technology.
- Shear thins when sealed to easily seal between cables and conduits.
- Broadest range of tested and compliant firestop systems.
- UL Tested and Classified for all common constructions up to and including 4 hours. FM Approved.
- Acoustically tested and proven to reduce sound transmission.
- UL leakage tested (L Ratings).
- Water-based - easy cleanup, installation and disposal.
- Safe to use, low VOCs, no solvents, non-halogenated.

**APPLICATIONS:**

- Single or multiple metallic conduits & tubing.
- Single or multiple non-metallic conduits & tubing.
- Electrical cables including all common types & sizes.\*
- Cable trays & bus ducts.

\*Recommended for cables that can be permanently sealed.



■ Red Color 
 P Permanent Solution
 ACOUSTICAL  
STC 62 In STC 62-Rated Wall Assembly

UPC# 730573	CAT. NO.	DESCRIPTION	QTY.	CASE QTY.	WEIGHT
01100	SSS100	10.1 oz. Tube (18.2 Cu. In., 300 ml)	1	12	.9 lbs (.4 kg)
01102	SSS102	2 gal. Pail (462 Cu. In., 7.6 L)	1	n/a	20 lbs (9 kg)
01105	SSS105	5 gal. Pail (1155 Cu. In., 19.0 L)	1	n/a	50 lbs (22.7 kg)
01103	SSS120	20 oz. Sausage (36 Cu. In., 592 ml)	1	12	1.55 lbs (.7 kg)
01129	SSS129	29 oz. Tube (52 Cu. In., 858 ml)	1	10	2.49 lbs (1.1 kg)



• **LCI INTUMESCENT SEALANT**



*Commercial grade, water-based firestop sealant engineered to address most common combustibile and non-combustibile electrical applications typically found in light commercial construction.*



**FEATURES & BENEFITS:**

- Suitable for common forms of construction including light commercial and grouped residential.
- Wide range of tested and compliant firestop systems.
- UL Tested and Classified for all common constructions up to and including 3 hrs.
- Acoustically tested and proven to reduce sound transmission.
- UL leakage tested (L Ratings).
- Water-based - easy cleanup, installation and disposal.
- Safe to use, low VOCs, no solvents, non-halogenated.

**APPLICATIONS:**

- Single or multiple metallic conduits & tubing.
- Single or multiple non-metallic conduits & tubing.
- Electrical cables including all common types & sizes.\*

\*Recommended for cables that can be permanently sealed.



■ Light Red Color 
 P Permanent Solution
 ACOUSTICAL  
STC 62 In STC 62-Rated Wall Assembly

UPC# 730573	CAT. NO.	DESCRIPTION	QTY.	CASE QTY.	WEIGHT
01170	LCI300	10.1 oz. Tube (18.2 Cu. In., 300 ml)	1	12	.94 lbs (.42 kg)
01175	LCI305	5 gal. Pail (1155 Cu. In., 19.0 L)	1	n/a	50 lbs (22.7 kg)
01172	LCI320	20 oz. Sausage (36 Cu. In., 592 ml)	1	12	1.59 lbs (.72 kg)
01179	LCI329	29 oz. Tube (52 Cu. In., 858 ml)	1	10	2.27 lbs (1 kg)



• **LC ENDOTHERMIC SEALANT**



*An economical, non-intumescent, non-halogenated sealant for non-combustible penetrants. Provides an economical solution where the application is primarily metallic conduits.*



**FEATURES & BENEFITS:**

- Easy and economical to use.
- UL Tested and Classified.
- Water-based - easy cleanup, installation and disposal!
- Safe to use, low VOCs, no solvents, non halogenated.
- Red color for easy identification and inspection.
- Acoustically tested and proven to reduce sound transmission.

**APPLICATIONS:**

- Concrete or masonry floors or walls.
- Multiple metallic conduits & tubing.
- Cable trays (alone or combined with firestop pillows).
- Electrical cables including all common types & sizes.\*

\*Recommended for cables that can be permanently sealed.



Deep Red Color



UPC# 730573	CAT. NO.	DESCRIPTION	QTY.	CASE QTY.	WEIGHT
01130	LC150	10.1 oz. Tube (18.2 Cu. In., 300 ml)	1	12	.94 lbs (.42 kg)
01135	LC155	5 gal. Pail (1155 Cu. In., 19.0 L)	1	n/a	58 lbs (26.3 kg)
01133	LC120	20 oz. Sausage (36 Cu. In., 592 ml)	1	12	1.92 lbs (.87 kg)
01131	LC129	29 oz. Tube (52 Cu. In., 858 ml)	1	10	1.92 lbs (.87 kg)



• **SIL SILICONE FIRESTOP SEALANT**



*A 100% silicone firestop sealant engineered to rapidly cure and resist washout when used in exposed conditions.*



**FEATURES & BENEFITS:**

- Low modulus - excellent adhesion.
- Cures quickly to resist washout.
- Reacts with atmospheric moisture to form a tough, durable seal.
- UL Tested & Classified with ratings up to and including 3 hours.
- UL Tested for W Ratings.
- Acoustically tested and proven to reduce sound transmission.

**APPLICATIONS:**

- Single or multiple metallic conduits & tubing.
- Single or multiple non-metallic conduits & tubing.
- Electrical cables including all common types & sizes.\*
- Cable trays & bus ducts.

\*Recommended for cables that can be permanently sealed.



Warm Gray Color



UPC# 730573	CAT NO.	DESCRIPTION	QTY.	CASE QTY.	WEIGHT
01310	SIL300	10.1 oz. Tube (18.2 Cu. In., 300 ml)	1	12	1.02 lbs (.46 kg)
01320	SIL320	20 oz. Sausage (36 Cu. In., 592 ml)	1	12	1.8 lbs (.82 kg)
01305	SIL305	5 gal. Pail (1155 Cu. In., 19.0 L)	1	n/a	55 lbs (24.95 kg)
01322	SIL320SL*	20 oz. Sausage (36 Cu. In., 592 ml)	1	12	1.72 lbs (.78 kg)
01326	SIL305SL*	5 gal. Pail (1155 Cu. In., 19.0 L)	1	n/a	53 lbs (24.04 kg)



\*Note: SL designates Self-Leveling Silicone Joint Sealant

**COMPOSITE SHEET**



*Lightweight, easily fabricated panels surface mount to walls and floors to provide a neat, clean firestop seal for medium to large openings typically used for cable trays, bus ducts, and conduit banks.*



**FEATURES & BENEFITS:**

- Easier to use. Half the weight and thickness of traditional panel products.
- Easier to cut and fabricate using common sheet metal tools.
- Expands up to 15X original thickness when burned.
- Superior air leakage ratings!
- Broad base of tested systems.
- UL Classified (up to 4 hr.)
- Acoustically tested and proven to reduce sound transmission.

**APPLICATIONS:**

- Medium to large openings through common constructions.
- Single or multiple cable trays for power, voice, and data.
- Multiple metallic conduits & tubing. Multiple mixed penetrants of many types.
- Blank Openings (penetrants removed).
- Suitable for clean room/area environment.
- Combine with the EZ-PATH® System for cable penetrations through large openings.
- Bus ducts.



Bare Metal Color



Permanent Solution



UPC# 730573	CAT. NO.	DESCRIPTION	QTY.	CASE QTY.	WEIGHT
11628	CS1628	16 x 28 in. (41 x 71 cm)	1	1	4.40 lbs (2 kg)
12436	CS2436	24 x 36 in. (61 x 92 cm)	1	1	8.40 lbs (3.8 kg)
13636	CS3636	36 x 36 in. (92 x 92 cm)	1	1	12.60 lbs (5.7 kg)
14136	CS3641	36 x 41 in. (92 x 104 cm)	1	1	14.40 lbs (6.5 kg)
15228	CS2852	28 x 52 in. (71 x 132 cm)	1	1	14.20 lbs (6.4 kg)



**SSM FIRESTOP MORTAR**



*Strong, lightweight, cementitious mortar mixes with water to seal medium to large openings typically used for cable trays or banks of conduits.*



**FEATURES & BENEFITS:**

- Light weight/low density - less forming required. Easier retrofit!
- Economical - highest yield per pound means lower installed cost.
- Combines with pillows for an economical High-Traffic® firestop solution.
- Wide range of applications - includes aluminum cable tray.
- Chemical adhesion reduces the need for expensive and time-consuming concrete fasteners.
- Versatile performer for a wide range of complex applications.
- UL Classified (up to 3 hr.).

**APPLICATIONS:**

- Concrete or masonry floors or walls.
- Multiple metallic conduits & tubing.
- Cable trays (alone or combined with firestop pillows).
- Electrical cables including all common types & sizes.\*

\*Recommended for cables that can be permanently sealed.



Pale Red Color



Permanent Solution

\* Recommended for cables that can be permanently sealed.

UPC# 730573	CAT. NO.	DESCRIPTION	QTY.	CASE QTY.	WEIGHT
04106	SSM106	Mortar 6 gal. Pail (22 Lbs., 10 Kilos)	1	n/a	24.00 lbs (10.9 kg)
04200	SSM22B	Mortar Bag (22 Lbs., 10 Kilos)	1	n/a	23.00 lbs (10.4 kg)



• **CABLE SPRAY**



*Water-based, spray-applied coating used to limit flame propagation and improves flame spread characteristics for grouped electrical cables.*



**FEATURES & BENEFITS:**

- Easy and economical to use.
- Water-based - easy cleanup, installation and disposal.
- Low friction formula - Less pump wear.
- Brushable for touch ups, spot repairs or small applications.

**APPLICATIONS:**

- Encapsulate grouped cables.
- Apply as fire breaks in cable tray runs.
- Electrical cables including all common types & sizes.\*

\*Recommended for cables that can be permanently sealed.



White Color



UPC# 730573	CAT. NO.	DESCRIPTION	QTY.	CASE QTY.	WEIGHT
07104	CS105	5 gal. Pail (1155 Cu. In., 19.0 L)	1	n/a	55.00 lbs (25 kg)



• **FIRESTOP ACCESSORIES**



*STI has several accessories available for installing firestop. Caulk tubes, mineral wool boards and even warning labels for labeling your barriers.*

UPC# 730573	CAT. NO.	DESCRIPTION	QTY.	CASE QTY.	WEIGHT
05001	SSAMW	Mineral Wool Boards (2) 2'x4'x1.5" Per box (5.08 x 10.16 x 3.81 cm)	1	-	12 lbs (5.4 kg)
05020	SSACG	Caulk Gun (11 oz.)	1	4	1.5 lbs (.7 kg)
05021	SSAQCG	29 oz. (858 ml) Caulk Gun	1	-	2.5 (1.1 kg)
05022	SSASCG	20 oz. (592 ml) Caulk Gun	1	-	2.9 (1.3 kg)
03775	SSWFT	Foil Tape 2" x 30'	1	6	0.44 (.2 kg)
09554	Z1005-892-CG	Firestop Penetration Warning Label (5 3/8" x 4 1/2") (13.65 x 11.43 cm)	1	1000/roll	0.01 (.005 kg)





#### NORTH AMERICA

Corporate Office  
210 Evans Way  
Somerville, NJ 08876 USA  
Tel: +1 908 526 8000  
Fax: +1 908 526 9623  
Email: [customerservice@stifirestop.com](mailto:customerservice@stifirestop.com)

#### EUROPE

Regional Office  
118 Avenue de France  
75013 Paris, France  
Tel: +33 6 70 58 50 40  
Email: [cs\\_europe@stifirestop.com](mailto:cs_europe@stifirestop.com)

#### MIDDLE EAST

Regional Office  
P.O. Box: 22952  
Dubai, UAE  
Tel: +971 4 44 39 312  
Email: [cs\\_middle\\_east@stifirestop.com](mailto:cs_middle_east@stifirestop.com)

#### CHINA

Regional Office  
Suite 2111, 21/F, Block C, South Tower,  
1068 Xin Gang Dong Road,  
Haizhu District, Guangzhou 510335, China  
Tel: +86 (20) 3804 9281  
Email: [cs\\_greater\\_china@stifirestop.com](mailto:cs_greater_china@stifirestop.com)

#### SINGAPORE

Regional Office  
Thomson Road Post Office  
P.O.Box 171  
Singapore 915706  
Tel: +65 9636 9000  
Email: [cs\\_south\\_east\\_asia@stifirestop.com](mailto:cs_south_east_asia@stifirestop.com)

#### LATIN AMERICA

Regional Office  
Av. Tancredo Neves, 450  
Edifício Suarez Trade, 16º Andar  
Salvador, BA 41820-901  
Tel: +71 3340 0685  
Email: [cs\\_latin\\_america@stifirestop.com](mailto:cs_latin_america@stifirestop.com)