

NON-RATED CABLE PATHWAYS

Zero-Maintenance Cable Management Solution For Smoke Partitions & Other Non-Rated Construction

REFERENCED STANDARDS

- ANSI/TIA-1179-2010 "Healthcare Facility Telecommunications Infrastructure Standard".
- ANSI/TIA-EIA-569 "Commercial Building Standard for Pathway's and Spaces"

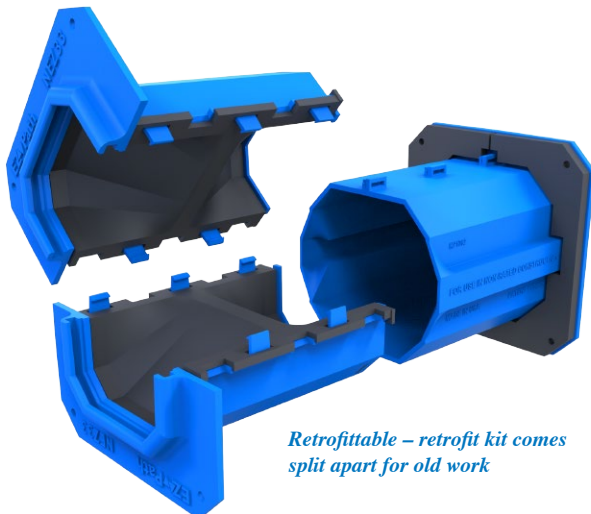
NON-RATED CABLE PATHWAYS

Take the easy path to cable management throughout your entire facility with EZ-Path® Smoke & Acoustical Pathway. The perfect complement to our original EZ-Path Fire Rated Pathway, this new device is designed for use in non-fire-rated barriers to provide:

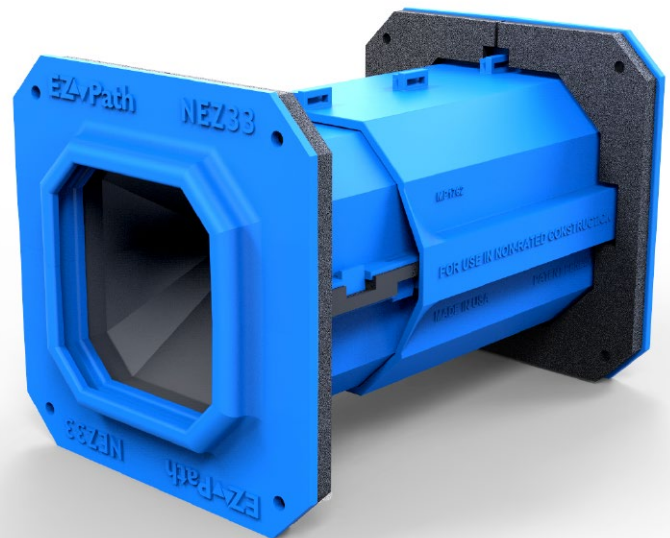
- **Air and smoke sealing**
- **Acoustical protection**
- **Cable management and aesthetics**

EZ-Path Smoke & Acoustical Pathway takes its cues from the original EZ-Path Fire Rated Pathway, the first and only zero-maintenance cable pathway. EZ-Path Smoke & Acoustical Pathway integrates the same great zero-maintenance feature at an economical price that makes it practical for use in non-fire-rated barriers. While openings in fire-rated barriers must be sealed per code, openings in non-fire-rated barriers are often sealed for other reasons, including:

- **Acoustical sealing to reduce sound transmission through barriers**
- **General sealing for smoke, odor, or indoor air quality.**
- **Reduction in movement of particulate air**
- **Providing infection control**

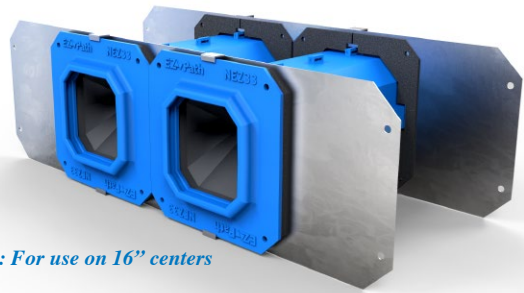


Retrofittable – retrofit kit comes split apart for old work

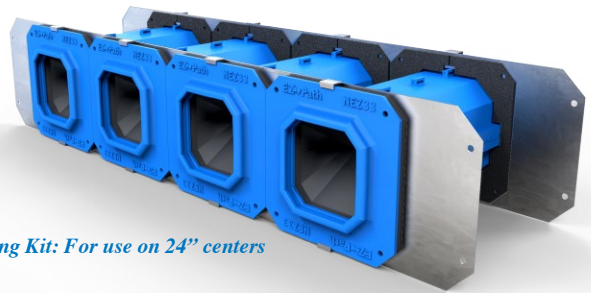


EZ-Path Smoke & Acoustical Pathway contains a built-in sealing mechanism that opens to allow cables to pass through and then automatically closes. The two-piece design with integrated wall flange is easily installed through a 4 inch (102 mm) diameter hole in barriers up to 8 inch (204 mm) thick. The durable design protects cabling and has no sharp edges that could damage cable jacketing. For retrofit situations, the device can be split apart to facilitate installation around existing cable bundles. Convenient gang plates are available for coupling multiple devices together in either a horizontal or vertical array.

EZ-Path Smoke & Acoustical Pathway does for non-fire-rated barriers what its companion, the EZ-Path Fire-Rated Pathway, did for fire-rated barriers by providing maintenance-free sealing of cables and cable management. It completes the aesthetic appearance. No more metal sleeves or jagged openings in walls. No dust to contaminate the environment liberated during cable pulling.



2 Gang Kit: For use on 16" centers



4 Gang Kit: For use on 24" centers

The perfect choice for any facility, EZ-Path® Smoke & Acoustical Pathways offer numerous advantages for each:

- HEALTHCARE -

- » Acoustical sealing protects patient privacy
- » Infection control through automatic sealing and remote cable pulls that disrupt less ceiling tiles
- » Perfect product for smoke sealing in smoke partitions

- DATA CENTERS -

- » Control of air flow
- » Smoke sealing in non-rated partitions

- BUSINESSES -

- » Acoustical sealing between offices or conference rooms
- » Environmental sealing to maintain indoor air quality and reduce odor transmission

- EDUCATION -

- » Acoustical sealing in classrooms
- » Environmental sealing to maintain indoor air quality and reduce odor transmission
- » Smoke sealing in non-rated partitions

EZ-Path Smoke & Acoustical Pathways have been tested to measure air leakage. Leakage ratings per device are <1 CFM empty and <2.5 CFM at maximum 100% visual fill, attesting to the ability of the device to provide necessary sealing function in various applications. Acoustical testing confirmed that the product can restore the STC (Sound Transmission Classification) Ratings to walls that have been penetrated with a maximum STC of 61. Physical testing to evaluate durability of device after repeated cable pulls and protection afforded to cables was also successful.

This new addition to the EZ-Path family will improve the way cables are pulled through rated and non-rated barriers. The original EZ-Path Fire Rated Pathway is the perfect choice for fire-rated construction (including smoke barriers, a particular type of smoke resistant barrier that carries a fire rating). The new EZ-Path Smoke & Acoustical Pathway can be used throughout the rest of the non-fire-rated barriers (including smoke partitions, a non-rated smoke resistant construction). Eliminate metal sleeves, protect sensitive cables, and make easy cable moves, additions, and changes without the need to remove or replace sealant, putty, or foam or open or close the sleeve with the EZ-Path System.

So choose the easy path with EZ-Path!

PROTECT CABLES FROM PHYSICAL DAMAGE

Traversing barriers can be hazardous to the health of important network cabling. Raw or jagged openings punched through walls with various implements such as hammers or jab saws can damage cable jackets or create pinch points during the cable pulling process. For this reason, many specifications call for sleeves. The National Electrical Code (NEC; NFPA 70) defines sleeves as, "short sections of metal enclosures or raceways used to provide support or protection of cable assemblies from physical damage". But sleeves made from conduit can leave sharp edges unless they are deburred or fitted with bushings. Furthermore, sleeves should be secured to the barrier to prevent movement during the cable pulling process.

EZ-Path Fire Rated Pathways and EZ-Path Smoke & Acoustical Pathways are the perfect replacement to sleeves in fire-rated and non-rated assemblies, respectively. There are no sharp edges and no pinch points. Mounting plates or integrated flanges lock the devices into the barrier. The self-adjusting membranes automatically open and close as cables are pulled through. Future moves, adds, and changes are a breeze with no manual action required to activate the internal sealing function.

WHAT IS A SMOKE WALL ANYWAY?

Smoke wall is a generic term applied to a barrier designed to resist smoke, but there are actually defined terms for smoke resistant construction and it is important to distinguish. Both the International Building Code® (IBC) and Life Safety Code® (LSC; NFPA 101) include a specific construction called a Smoke Barrier. A smoke barrier is a fire-rated wall or floor that is also required to resist smoke passage. Both codes include a second type of smoke-resistant barrier defined as a Smoke Partition. Smoke partitions are typically non-fire-rated.

In Smoke Barriers...only use EZ-Path Fire Rated Pathways!

In Smoke Partitions...both EZ-Path Fire Rated Pathways and our new EZ-Path Smoke & Acoustical Pathway are approved!



210 Evans Way, Somerville, NJ 08876 USA | T: 800.992.1180 | F: 908.526.9623 | www.stifirestop.com