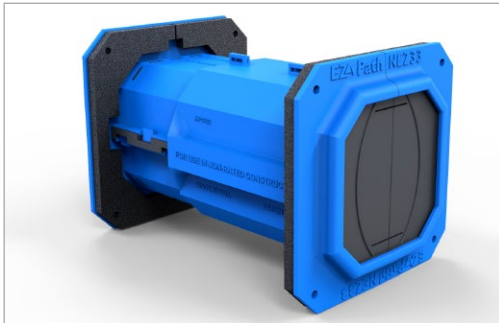
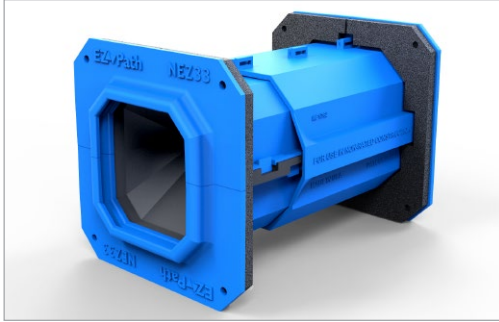




EZ-PATH® SMOKE & ACOUSTICAL PATHWAY



▼ PRODUCT DESCRIPTION

EZ-Path® Smoke & Acoustical Pathway is a pathway device designed to allow cables to penetrate non-rated walls and floors without the need for smoke sealing. This device features a built-in smoke sealing system that automatically adjusts to the amount of cables installed. Once installed in a barrier, cables can be easily added or removed at any time without the need to remove or reinstall caulking materials.

Its unique profile allows a maximum number of cables to be installed in a relatively small area. The pathway measures approximately 4.5" (114 mm) x 4.5" (114 mm) and is adjustable to accommodate wall and floor thicknesses between 4" (102 mm) and 8" (203 mm).

▼ APPLICATIONS

EZ-Path® Smoke & Acoustical Pathway is designed for easy installation in non-rated floors and walls. Tested and approved cable capacities range from 0 to 100% visual fill. With its split body design, the device can be easily disassembled and installed around previously installed cables in existing construction.

EZ-Path® Smoke & Acoustical Pathway provides exceptional cable capacity. A single unit installed in a wall exceeds the cable carrying capacity of a 4" (102 mm) sleeve utilizing typical putty firestop systems (35% cable loading). Multiple ganged devices utilizing available duplex, or quad wall plates provide additional capacity or segregation of cables by use, type, installer or vendor as desired.

▼ FEATURES & BENEFITS

- Cable Management by use, type and vendor
- Zero Maintenance - easy moves, adds and changes
- Excellent Acoustical Performance; Low Smoke Leakage Ratings
- Easy to install - can be installed horizontally and vertically
- Retrofittable – retrofit kit comes split apart for old work
- Clean, engineered appearance
- Pathways can be ganged for additional capacity
- Pathway adjusts to accommodate wall and floor thicknesses between 4" (102 mm) & 8" (203 mm)

▼ PHYSICAL PROPERTIES

Shell Composition	V-0 High Impact ABS/PC Thermoplastic
Seal & Curtain	Flame Retardant Neoprene Rubber
Cable Loading Area	6.7 in ² (43.2 cm ²)
Allowable Cable Fill	0 - 100%
Wall Area Required (ft ² / Device)	.167 ft ²
In-Service Temp.	-30°F - 130°F (-34°C - 54°C)

▼ PERFORMANCE

Max Cable Loading (Visual Fill)	L Rating (CFM/Device)
0%	< 1
100%	< 2.5
Note: L Ratings Tested According to Air Leakage Test Procedure As Outlined in UL1479 without a Fire Test. DEVICE NOT SUITABLE FOR USE IN FIRE RATED BARRIERS.	
Plenum tested to UL2043 (Horizontal Installations Only)	
Sound Transmission Classification (STC) tested per ASTM E90	61

▼ INSTALLATION INSTRUCTIONS

Installation in walls for new cabling installations utilizes one, two or four devices with appropriate wall plates and gaskets. Installation is easily and quickly accomplished using the following steps:

1. Locate center
2. Drill 4" (102 mm) diameter hole using a circular hole saw (see fig.1)
3. Using outer sleeve as guide, insert in opening and locate the flange mounting holes. Remove sleeve. (see fig.2)
4. Using the hardware supplied, drill appropriate size hole and install anchor. (see fig.3)
5. Insert inner sleeve and secure to wall. Be careful not to over tighten. (see fig.4)
6. On the opposite side of the wall repeat steps 1 - 4 and install the outer sleeve.
7. Apply wall label after installation.

Note: When installing NEZ33 the EZ-Path logo needs to be facing you in the upright position. For vertical installations, horizontal supports should be installed.

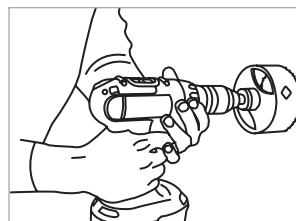


Fig. 1

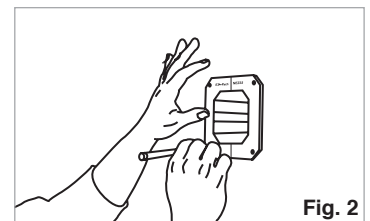


Fig. 2

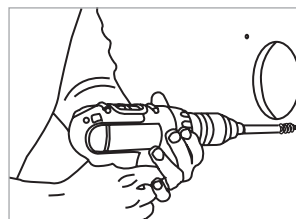


Fig. 3

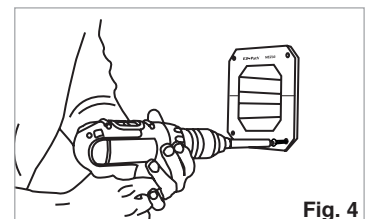


Fig. 4



▼ GANG PLATE INSTALLATION INSTRUCTIONS

Installation in walls for new cabling installations utilizes two or four devices with appropriate wall plates.

1. Position and mount gang plate to wall. (see fig.1)
 - For 2 gang plate, fasten on 16" (41 cm) centers.
 - For 4 gang plate, fasten on 24" centers.
2. Locate and mark centers of each device. (see fig.2)
3. Drill a 4" (102 mm) diameter hole using a circular hole saw for each device. (see fig.3)
4. Using outer sleeve as guide, insert in opening and attach to gang plate. (see fig.4)
5. On the opposite side of the wall repeat steps 1 - 4 and install the outer sleeves.
6. Apply wall label after installation.

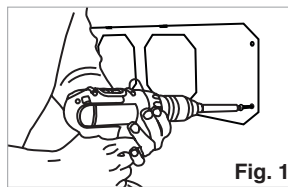


Fig. 1

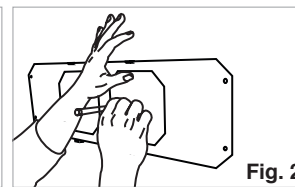


Fig. 2

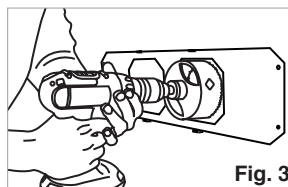


Fig. 3

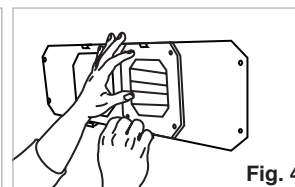


Fig. 4

▼ CABLE INSTALLATION

Cables may easily be added or removed at any time without removing or reinstalling the smoke and acoustical seal. Cables may be added individually or in bundles. Wrapping ends with a low-friction tape facilitates cable insertion. A self-adjusting cable throat automatically adjusts to accommodate the cable bundle as it passes through the pathway. To minimize smoke leakage, it is recommended that cables be distributed evenly across the bottom of the pathway and built up in even layers.

▼ MAINTENANCE

No maintenance of the pathway is normally required. The interior of the device should be inspected before and after any modifications to the cable bundle.

▼ TECHNICAL SERVICE

Technical information including Product Data Sheets, Installation Instructions, Certificates of Conformance, and suggested specifications are available at the company's web site (www.stifirestop.com). For all other information, contact the manufacturer directly by dialing (800) 992-1180.

▼ PRECAUTIONARY INFORMATION

The use of this device is subject to local, regional and national codes. Consult the local Building Code Official or Authority Having Jurisdiction regarding any regional or local requirements that might influence the selection or use of this product. **Note: For use in non-rated construction only.**

▼ AVAILABILITY

See Ordering Information below. EZ-Path® Smoke & Acoustical Pathway Products are available from designated authorized STI distributors. Consult the factory or visit the web site (www.stifirestop.com) for the names and locations of the nearest sales representatives or distributors.

▼ ORDERING INFORMATION

UPC# 730573	Cat. No.	Description	Qty.	Case Qty.	Weight (Ea.)
11158	NEZ33	EZ-Path® Smoke and Acoustical Pathway (Device Only) with hardware	1	4	0.90 lbs (0.41 kg)
11159	NEZDP233	EZ-Path® Smoke and Acoustical Pathway Two Gang Kit (2 NEZ33 Pathways & 2 NEZP233 Two Gang Plates)	1	N/A	2.80 lbs (1.27 kg)
11160	NEZDP433	EZ-Path® Smoke and Acoustical Pathway Four Gang Kit (4 NEZ33 Pathways & 2 NEZP433 Four Gang Plates)	1	N/A	4.82 lbs (2.20 kg)
11161	NEZP233	EZ-Path® Smoke and Acoustical Pathway Two Gang Plate Kit (Plates Only)	1	N/A	1.00 lbs (0.45 kg)
11162	NEZP433	EZ-Path® Smoke and Acoustical Pathway Four Gang Plate Kit (Plates Only)	1	N/A	1.22 lbs (0.55 kg)

IMPORTANT NOTICE: All statements, technical information, and recommendations contained herein are based upon testing believed to be reliable, but the accuracy and completeness thereof is not guaranteed.

LIMITED WARRANTY: STI warrants that its products will be free of defects for one year from the date of purchase. In the event a product does not conform to this warranty, the sole and exclusive remedy is, at STI's option, replacement of the product or refund of the purchase price. The warranty provided herein shall be void and of no effect in the event that the product is not installed in accordance with STI's published instructions, listed systems and applicable building and safety codes. THIS WARRANTY IS IN LIEU OF ALL OTHER REPRESENTATIONS AND EXPRESSED OR IMPLIED WARRANTIES (including the implied warranties of merchantability or fitness for a particular use) AND UNDER NO CIRCUMSTANCES SHALL STI BE LIABLE FOR ANY DIRECT, INDIRECT, SPECIAL, INCIDENTAL OR CONSEQUENTIAL DAMAGES OR LOSSES, INCLUDING, WITHOUT LIMITATION, ANY LOSS OF REVENUE, PROFIT OR USE. Prior to use, the user shall determine the suitability of the product for its intended use, and the user assumes all risks and liability for subsequent use. No person other than an officer of STI is authorized to bind STI to any other warranty for any product for which this warranty is issued.

MADE IN THE USA – © 2014 SPECIFIED TECHNOLOGIES INC.

